

BOARD OF TRUSTEES

Charlie Pitigliano
County of Tulare

Robert Uchita
County of Tulare

Stan Creelman
County of Tulare

Tony Nunes
County of Tulare

Craig Smith
City of Tulare

Charles Mayer
City of Visalia

TULARE MOSQUITO ABATEMENT DISTRICT

District Headquarters: Mefford Field - Tulare
6575 Dale Fry Rd • Tulare, CA 93274

(559) 686-6628

TulareMosquito@gmail.com

www.tularemosquito.com

GENERAL MANAGER
Michelle Dempsey

OPERATIONS DIRECTOR
Jacob Davis

ADMINISTRATIVE ASSISTANT
Sheri Davis



The Tulare Mosquito Abatement District Board of Trustees Meeting will be held on Tuesday, September 12, 2023 at 1:00 p.m. at the District office located at Mefford Field 6575 Dale Fry Rd, Tulare, CA

AGENDA

1. Citizen Comments: At this time the Board of Trustees will take input from citizens on items they wish to address that are within the Board's jurisdiction. However, the Board cannot legally discuss or take action at this meeting on comments received.
 2. Review Minutes of the August 8, 2023 Board of Trustee Meeting.
 3. Payment of Check Numbers **7276 - 7309**
Payment of Direct Deposit Numbers **DD 1594 - DD 1607**
Electronic Fund Transfers (EFTPS) from US Bank to the IRS and EDD for Social Security, Medicare, Federal and State Tax Payments. E Debit payments from the District's US Bank account. Claim number **21953** Transfer of Funds from Tulare County Fund #778 to the District's US Bank Account # *****4633.
 4. Asphalt Sealing and Repair Update
 5. State Funded Aerial Applications Update
 6. Discussion on FEMA/CalOES Public Assistance Program Update
 7. District Activity to Date
 8. Discussion, Decision and Action to Approve Updated Contact Letter
 9. Discussion, Decision and Action to Approve Purchase of a Trailer for the Drone Program
- Convene to Closed Session:
10. Government Code Section 54956.95 – Liability Claim: Claimant Cari McCormick.
Agency Claimed Against: Tulare Mosquito Abatement District
- Reconvene to Open Session
11. Manager's Report
 - a. US Bank - Visa Card - Qrt 2 Rebate Check
 - b. Fall Regional Continuing Education Program - Jacob will be presenting
 - c. Staffing Update
 12. Meeting Adjourned

MINUTES OF THE MEETING OF THE BOARD OF TRUSTEES OF THE TULARE MOSQUITO ABATEMENT DISTRICT, HELD AT THE OFFICES OF THE DISTRICT, MEFFORD FIELD, TULARE, CALIFORNIA ON THE 8th DAY OF AUGUST 2023, AT THE HOUR OF 1:00 P.M. OF SAID DAY

Present at the meeting called at 1:03 p.m. at the place above designated were: Charlie Pitigliano, presiding, Craig Smith, Stan Creelman, Tony Nunes, and Chuck Mayer. Robert Uchita was absent. Also present at the Board Meeting were Michelle Dempsey, General Manager, Jacob Davis, Operations Director, Sheri Davis, Administrative Assistant, and Chad M. Lew, counsel for the District.

Agenda Item No. 1: Citizen Comments.

Charlie Pitigliano opened the floor to citizen comments, but there were no comments from the public.

Agenda Item No. 2: Review Minutes of July 11, 2023 Board of Trustee Meeting.

The minutes of the meeting held on July 11, 2023, were presented to the board in writing and reviewed. Upon a motion made by Charles Mayer, seconded by, Stan Creelman, and unanimously carried, the minutes of the board meeting held on July 11, 2023, were approved as presented.

Agenda Item No. 3: Payment of Check Number 7240 - 7275, Payment of Direct Deposit Numbers DD 1580 - DD 1593; Electronic Fund Transfers (EFTPS) from US Bank to the IRS for Social Security, Medicare and Federal Tax Payments, US Bank Charges and Credits, and Claim Numbers 21951 and 21952, Transfers of Funds form Tulare County Fund #778 to the District's US Bank Account #***4633.**

The board members reviewed the District's US Bank checking account, check numbers 7240 - 7275, payment of direct deposit numbers DD 1580 - DD 1593, the electronic fund transfers (EFTPS) for payment of Social Security, Medicare and Federal Tax Payments to the IRS, the electronic debit payments from the District's US Bank account, and claim number 21951 in the sum of \$164,296.32 and claim number 21952 in the sum of \$224,808.21, which were transfers from the District's Tulare County Fund #778 to the District's US Bank account number ending in 4633. Upon a motion duly made by Stan Creelman, seconded by Craig Smith, and unanimously carried, the US Bank checking account, check numbers 7240 - 7275, payment of direct deposit numbers DD 1580 - DD 1593, the electronic fund transfers (EFTPS) for payment of Social Security, Medicare and Federal Tax Payments to the IRS, the electronic debit payments from the District's US Bank checking account, and the transfer from the District's Tulare County Fund #778 to the District's Union Bank account number ending in 4663, by claim number 21951 in the sum of \$164,296.32 and claim number 21952 in the sum of \$224,808.21, were approved.

Agenda Item No. 4: Discussion, Consideration and Action to Approve Engagement Letter from Adair & Evans for FY 22/23 Audit.

Michelle presented the board with the proposed engagement letter from Adair & Evans related to the services for the fiscal year 2022/2023 audit of the District. After some discussion, upon a motion made by Stan Creelman, seconded by Tony Nunes, and unanimously carried, the board approved the Adair & Evans engagement letter, in an amount not to exceed \$14,000.00, as presented and

authorized the general manager to execute the Adair & Evans engagement letter dated July 10, 2023, on behalf of the District.

Agenda Item No. 5: Discussion, Decision and Action to Approve Asphalt Sealing and Repair. Michelle presented to the board the proposal from Asphalt Sealing & Repair, dated April 19, 2023, for asphalt cleaning, maintenance and repair in the proposed sum of \$5,577.00. After some discussion, upon a motion duly made by Charles Mayer, seconded by Stan Creelman, and unanimously carried, the board approved the proposal from Asphalt Sealing & Repair, dated April 19, 2023, for the asphalt cleaning, maintenance and repair at the District Office, in an amount not to exceed \$5,600.00, and authorized the general manager to execute all documents necessary.

Agenda Item No. 6: District Activity To Date.

Jacob presented and reviewed with the board the District's activity to date. He reviewed the District's WALs program; activities in the flood area; surveillance activity of the District, the service requests year over year analysis; and reviewed the California Arbovirus Surveillance Bulletin #17 with the board.

Agenda Item No. 7: Discussion, Consideration and Action to Approve Purchase of a Generator for the Drone Program.

Michelle and Jacob advised that the District's drone program was now operational and the District is utilizing the application drone in the field. Jacob advised that if the District desires to treat large acreage in the field that it would be necessary for the District to purchase a generator so that the batteries for the application drone can be charged in the field. Jacob presented the board with various generators that would meet the needs of the District's drone program. After some discussion, upon a motion duly made by Stan Creelman, seconded by Tony Nunes, and unanimously carried, the board authorized the purchase of the Westinghouse Outdoor Power Equipment 12500 at a cost not to exceed \$1,250.00, and authorized District management to execute any documents necessary to complete the purchase.

Tony Nunes left the meeting at 1:54 p.m.

Agenda Item No. 8: Discussion on State Funded Aerial Applications.

Michelle provided the board with an update of the State funded aerial applications by VDCI in the Allensworth, Alpaugh and Tulare Lake area within the District. She advised the board that the District in consultation with the State and VDCI made minor changes to the areas sprayed in and around Allensworth, Alpaugh and Tulare Lake area. Michelle also reported to the board that the aerial applications have been very effective and of great assistance to the District.

Agenda Item No. 9: Discussion on FEMA/CalOES Public Assistance Program Update.

Michelle advised the board that the District recently had a meeting with its FEMA case manager. The case manager advised that they requested that the CDC to conduct an evaluation of Appendix G, and that the CDC evaluation has been completed and CDC concurred that there was increased

mosquito activity and disease within the District as a result of the flood waters.

Agenda Item No. 10: Discussion, Decision and Action to Approve State of California Designation of Applicants Agent Resolution.

Michelle presented the board with the CalOES Designation of Applicant's Agent for Non-State Agencies, which is necessary in connection with the District's FEMA/CalOES reimbursement request related to the flood water emergency. The board was presented with a completed form that designated as the District authorized agents the general manager, operations director, and administrative assistance. Upon a motion duly made by Craig Smith, seconded by Charles Mayer, and unanimously carried, the board approved the CalOES Designation of Applicant's Agent for Non-State Agencies, as presented, and authorized the execution of the certification of the document by the board president.

Agenda Item No. 11: Manager's Report.

- a. Unfunded Accrued Liability for FY 23/24 - Michelle advised the board that the District received notice CalPERS of its unfunded accrued liability as of June 30, 2021, of \$155.00 and \$22,221.00, on its two retirement plans, which the District paid in full.
- b. CalPERS Health Rates for 2024 - Michelle advised the board that the District will see a rate increase for its CalPERs health insurance plan premium for 2024.
- c. CSDA Annual Conference - Michelle advised the board that some members of the management team would be attending the CSDA annual conference this month.

Agenda Item No. 12: Meeting Adjourned.

There being no further business before the board, upon a motion duly made by Charles Mayer, seconded by Stan Creelman, and unanimously carried, the meeting was adjourned at 2:25 p.m.

SECRETARY

Expenses 8/15/2023

Agenda Item #3

			Expenses	
Union				
Check #'s				
EFTPS				
E Debits				
	Full Time Employees			
DD1594	Michelle Dempsey		4,733.22	6001
DD1595	Jacob Davis		3,722.87	6001
DD1596	Jorge Lopez		2,497.75	6001
DD1597	Ryan Stallings		2,127.71	6001
DD1598	Quirino Valencia		2,566.09	6001
DD1599	Victor Zamora		2,557.95	6001
DD1600	Sheri Davis		2,758.69	6001
	Seasonal Employees			
7276	John Coleman		1,765.29	6005
7277	Justin Manning		1,855.65	6005
7278	Pedro Medina-Mendez		1,527.25	6005
7279	Matthew Minter		1,606.25	6005
7280	Josephina Ortiz		1,527.25	6005
7281	Rene Rodriguez		1,744.29	6005
7282	David Servi		1,828.71	6005
7283	Quirino Valencia III		1,849.59	6005
EFTPS	CA Emp Dev Dept	UI, ETT, SDI & PIT	1,826.21	6004
7284	Charlie Pitigliano		100.00	6008
7285	Stan Creelman		100.00	6008
7286	Charles Mayer		100.00	6008
7287	Craig Smith		100.00	6008
7288	Tony Nunes III		100.00	6008
EFTPS	CalPERS (Employee)	Employee Additional 457 Roth	550.00	6011
EFTPS	CalPERS (Employee)	Employee Additional deferred contribution	475.00	6011
EFTPS	CalPERS (Retirement)	PERS Retirement contribution Employer & Employees	4,710.80	6011
EFTPS	EFTPS.gov	Federal Inc Tax. Employee/Employer Medicare & SS	9,841.34	6012
7289	Adapco	Belts and Throttle Arm for A1 Sprayer	408.30	7002.1
7290	G.V. Burrows	Vehicle Fuel - 794.8 Gallons	3,537.16	7022
EFTPS	CalPERS	GASB 68 Reports (Classic & PEPRA)	700.00	7043
7291	McCormick, Kabot & Lew	Board Meeting 8/8/2023	5,175.00	7043
		Prepare for Special Meeting, Conference with Michelle, Jacob & Sheri after meeting		
		Telephone Conferences with Mike Scheanan re: sub-lease of hangar		
		Teleconferences, Zoom meeting Tulare County, email to Sentaor Hurtado		
		Emails re: Revised Resource Request with Tulare County and CDPH; Emails with Vanessa at KP Public Affairs; Review trap data reports; Review aerial treatment maps		
		Status Updates from Sheri re: Resource Request with Tulare County and CDPH		
7292	City of Tulare	Land Rent	774.00	7062
7293	Michelle Dempsey	CSDA Conference - Per Diem	333.00	7074
7294	Sheri Davis	CSDA Conference - Per Diem	333.00	7074
E Debit	US Bank Charges	Direct Deposit Fees	12.25	7036
			63,844.62	

Expenses		8/31/2023			
Union		6001 Transfer Funds from Salaries and Benefits FY 23/24 Budget	\$128,742.23		
Check #'s		7000 Transfer Funds from Services and Supplies FY 23/24 Budget	\$31,516.43		
EFTPS		8300 Transfer Funds from Fixed Assets FY 23/24 Budget	\$1,222.16		
E Debits			<u>\$159,480.81</u>		
	Full Time Employees				
DD1601	Michelle Dempsey		4,733.23	6001	
DD1602	Jacob Davis		3,722.86	6001	
DD1603	Jorge Lopez		2,497.76	6001	
DD1604	Ryan Stallings		2,127.70	6001	
DD1605	Quirino Valencia		2,190.82	6001	
DD1606	Victor Zamora		2,557.96	6001	
DD1607	Sheri Davis		2,753.69	6001	
	Seasonal Employees				
7295	John Coleman		1,765.29	6005	
7296	Justin Manning		2,006.27	6005	
7297	Pedro Medina-Mendez		1,527.25	6005	
7298	Matthew Minter		1,606.25	6005	
7299	Josephina Ortiz		1,652.41	6005	
7300	Rene Rodriguez		1,744.29	6005	
7301	David Servi		1,828.70	6005	
7302	Quirino Valencia III		1,849.59	6005	
EFT	CA Emp Dev Dept	UI, ETT, SDI & PIT	1,760.68	6004	
EFT	CalPERS (Health)	Monthly Health Premium -	20,079.40	6004	
7303	Principal Insurance Co.	Monthly Premium Dentla, Vision, Life	1,246.18	6004	
7304	Assurity Life Insurance Co.	Employee Additional Health	426.11	6004	
7305	AFLAC (Employee)	Employee Additional Health	37.60	6004	
EFT	CalPERS (Employee)	Employee 457 Loan Payment	375.28	6011	
EFT	CalPERS (Employee)	Employee Additional 457 Roth	550.00	6011	
EFT	CalPERS (Employee)	Employee Additional deferred contribution	475.00	6011	
EFT	CalPERS (Retirement)	PERS Retirement contribution Employer & Employees	4,710.80	6011	
EFTPS	EFTPS.gov	Federal Inc Tax. Empe,Empr Medicare & SS	9,940.20	6012	
	Service & Supplies				
7306	Adapco	Vectobac GS - 40 lb bags (x40)	3,654.52	7002	
7307	Clarke	Natular 2EC - 2.5 gal (x1)	4,570.08	7002	
7308	G.V. Burrows	Vehicle Fuel - 855.1 gallons	3,993.42	4,120.76	7022
		Supreme Motor Supreme Motor Oil	127.34		
E Debit	US Bank Charges				
		So Cal Edison	966.68	997.21	7081
		So Cal Gas Co.	18.28		7081
		Direct Deposit Fee	12.25		7036
	U.S. Bank Charges & Credits				
7309	California Turf Equip	Shutter for Backpack Blower	8.11	8,123.32	7001
	Tractor Supply	Chicken Feed	26.49		7001
	Brilite	Refund for Batteries	(108.91)		7001
	Amazon.com	Heavy Duty Scale; USB Card Reader(Drone)	76.13		7001.1
	Morris Levin & Son	Pipe Strap (Drone)	8.79		7001.1
	Apple.com	UASidekick Annual Subscription(Drone)	59.99		7001.1
	Dept of Pesticide Regulations	UAL Pilot Application Fee	45.00		7001.1
	Amazon.com	Toolbox, Relay Harness, Washdown & Waterpump, Trailer Hitch Pins	439.02		7001.2
	Morris Levin & Son	PVC, Drive Control Rod, Brass Nipples, Hose Clamp, ETC.	375.13		7001.2
	Lowe's	Batteries; Wood; PVC; Connectors; Dremel Tools; ETC	219.14		7001.2
	Linde	Dry Ice for CO2 Traps	355.44		7001.2
	SRC Products	Headsets w/ Intercom System (Airboat)	554.30		7001.2
	Grainger	Plastic Rod (Airboat)	70.16		7001.2
	Mid Valley Pipe	Flat Bar, Square Tube (Airboat)	49.10		7001.2
	YOSEMITE LINEN	Employee Uniforms/Laundry	634.51		7004
	VERIZON	Office and Field Phones	316.65		7005
	CARMINE	Monthly Tier for GPS	339.83		7005
	T MOBILE	iPads, Phones (Michelle & Jacob)	244.46		7005
	DIGITAL SPACE	Monthly Faxline	10.00		7005
	Smart & Final	Gatorade	50.27		7009

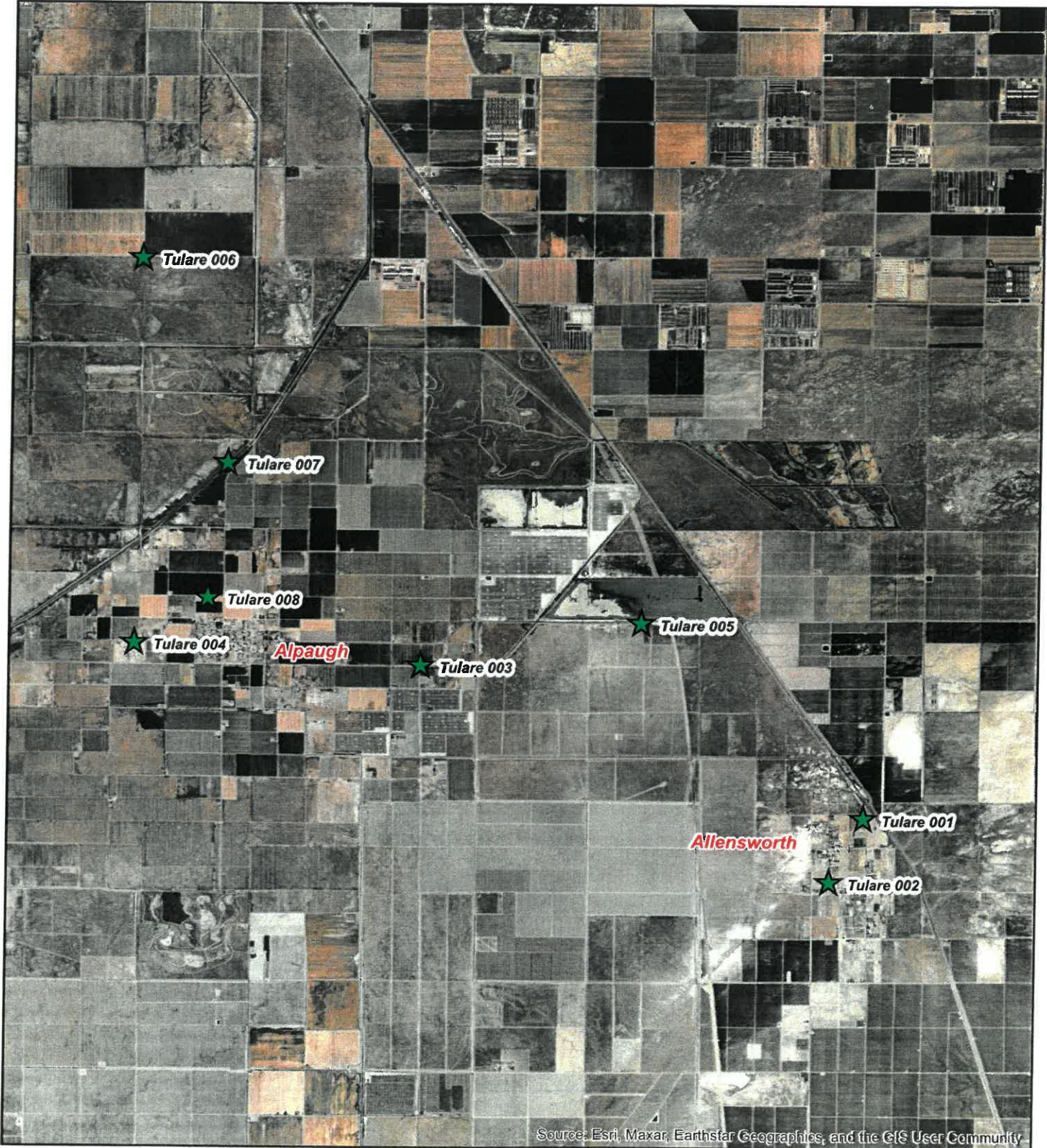
CULLIGAN	Bottled Water	46.50	7009
Battery Pro	Forklift Battery	128.65	7021
C.P. Phelps	Propane, Idler Pulley Truck #1	69.60	7021
Carroll's Tire	New Tires Truck 1, 3, 10	593.77	7021
Lowe's	Hitch Ball Mounts and Clips (x2)	71.36	7021
Amazon.com	Air Filter- Truck #8	28.37	7021
Morris Levin & Son	Fittings; Barb- Truck #7	11.65	7021
AutoZone	Trailer Hitch, Electrical Plug- Truck #12	41.12	7021
Smith Sign & Decal	Tailgate Lettering (Colorado)	250.00	7021
USPS	Stamp Rolls (x2)	132.00	7036
Amazon.com	Post-It Notes, Charger for Tablet, Monthly Planners	73.76	7036
CLINE'S BUSINESS EQUIP	Copy count - C220 - 7/4 - 8/3/2023	30.00	7036
CLINE'S BUSINESS EQUIP	Copy count - C308 - 7/4 - 8/3/2023	76.95	7036
CLINE'S BUSINESS EQUIP	IT Services	60.00	7036
UNWIRED	Monthly Internet 6/22/23-7/21/23	125.97	7036
Shaka Guide	NPMA- Guide for Conference	29.99	7066
Hilton Palm Springs	MVCAC Fall Meeting Hotel One Night Prepay-Jacob	229.19	7074
Portola Hotel	Conference (Michelle & Sheri)	634.92	7074
NPMA	Car Rental for Conference	320.24	7074
City of Tulare	Water Bill	173.52	7081
Factory Pure	Generator for Drone	1,222.15	8300

95,636.19

Tulare County, CA

Trap Locations

★ Trap Locations

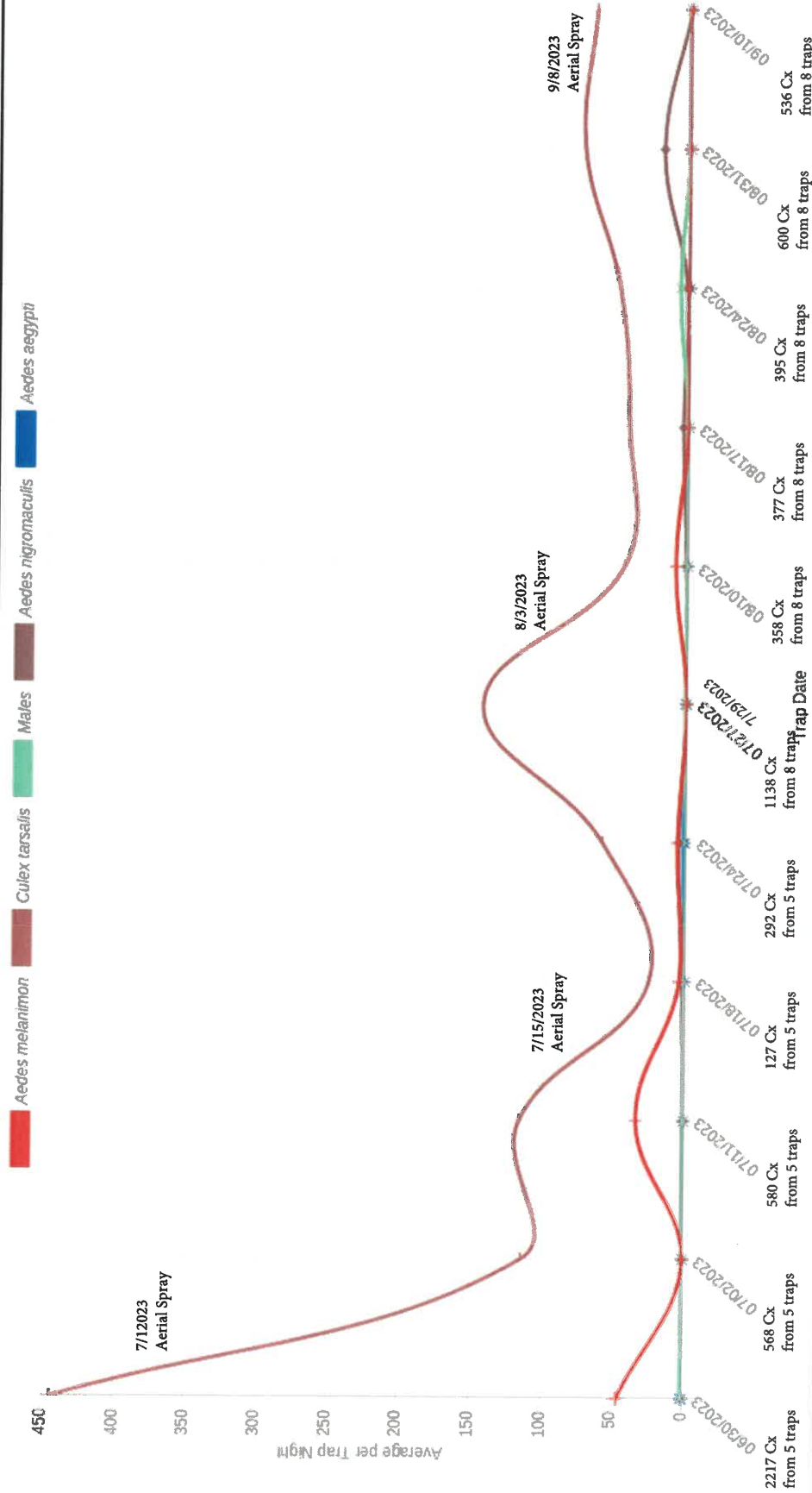


Source: Esri, Maxar, Earthstar Geographics, and the GIS User Community

Adult Mosquito Surveillance Summary

Start Date: 05/02/2023 End Date: 09/17/2023

California Department of Public Health

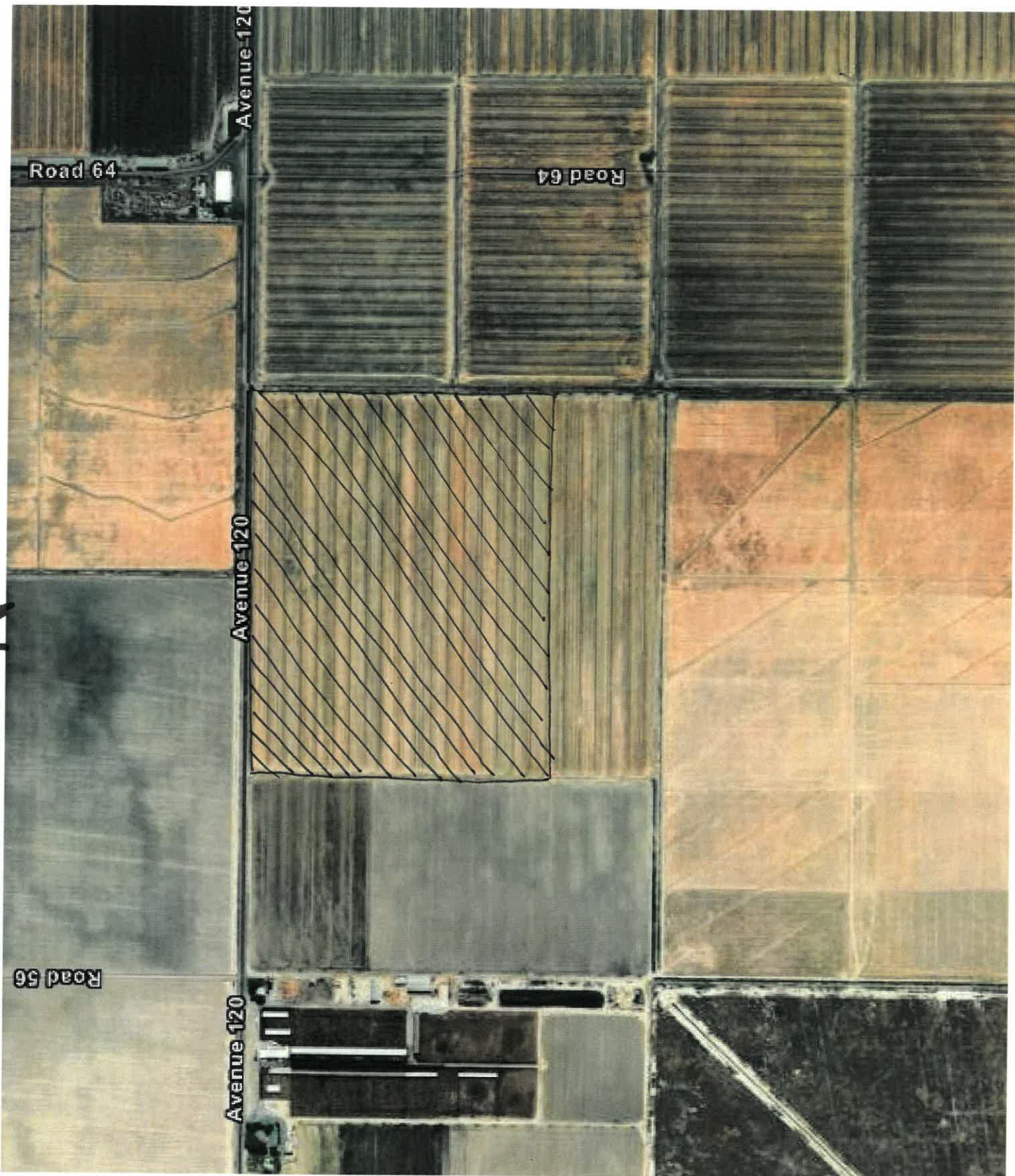


Vector Disease Control International
1320 Brookwood Drive Suite H
Little Rock, AR 72202

N Creighton's Ranch



N



N



Agenda Item # 6

GAVIN NEWSOM
GOVERNOR



NANCY WARD
DIRECTOR

August 3, 2023

Michelle Dempsey, General Manager
Tulare Mosquito Abatement District
6575 Dale Fry Road
Tulare, California 93274

Subject: Approval of Request for Public Assistance
FEMA-4699-DR-CA, California Severe Winter Storms, Straight-line
Winds, Flooding, Landslides, and Mudslides
Cal OES ID: 107-91008 FEMA ID: 107-U9TON-00
Subrecipient: Tulare Mosquito Abatement District
Cal OES Log: COR-000802 FEMA Log: None

Dear Michelle Dempsey:

The California Governor's Office of Emergency Services (Cal OES) is pleased to inform the Tulare Mosquito Abatement District (Subrecipient) its Request for Public Assistance (RPA) for the California Severe Winter Storms, Straight-line Winds, Flooding, Landslides, and Mudslides has been approved by the Federal Emergency Management Agency (FEMA). You should have been notified of your RPA Approval by a system-generated email from FEMA's web-based Grants Portal system (support.pagrants@fema.gov). This letter contains additional helpful information. Cal OES requests you use the Cal OES ID number noted above (if applicable) when corresponding with Cal OES for this disaster. All correspondence should be addressed to:

Mr. Robert Larsen, State Public Assistance Officer
California Governor's Office of Emergency Services
Recovery Section, Public Assistance Division
3650 Schriever Avenue
Mather, California 95655
ATTN: FEMA-4699-DR-CA

Incident Period

Eligibility of Public Assistance costs, as a result of the California Severe Winter Storms, Straight-line Winds, Flooding, Landslides, and Mudslides, will be based on events that occurred within the incident period of February 21, 2023, and



3650 SCHRIEVER AVENUE • MATHER, CA 95655
RECOVERY SECTION • PUBLIC ASSISTANCE
PHONE: (916) 845-8200 • FAX: (916) 845-8387
www.CalOES.ca.gov

continuing. Pursuant to Title 44 of the Code of Federal Regulations (44 CFR) section 206.202(d)(1)(ii), any known damage that occurred within the incident period must be reported to FEMA/Cal OES within 60 days of the Recovery Scoping Meeting, via Grants Portal - Damage Inventory, to be eligible for federal assistance.

Deadline to Identify Projects

Project Worksheets (PW) are the reimbursement vehicles used to fund disaster projects. PWs are used to document the location, damage description and dimensions, scope of work, and cost estimate for each project. The PW is the basis for funding and all cost estimates and damage must be identified within 60 days following the Recovery Scoping Meeting for each of those projects identified on the subrecipient's Damage Inventory via Grants Portal. Damages and costs must be estimated when final supporting documents are not yet available. As the subrecipient, you are strongly encouraged to submit PW information as soon as possible to expedite the assistance and funding process. Failure to identify and submit PW information in accordance with these parameters may jeopardize project funding, or place additional work requirements on subrecipients to ensure reimbursement of all project costs. Project funding or payment is not available for a PW until it is obligated by FEMA.

Project Completion Deadlines

In accordance with 44 CFR section 206.204(c)(1), FEMA requires all projects be completed within approved timeframes or funding may be jeopardized. It is imperative subrecipients submit a time extension request for any project that will not be completed by the current approved project deadline. Further, time extensions will be granted by Cal OES or FEMA only if the subrecipient can demonstrate extenuating circumstances or unusual project requirements beyond its control that prevent the successful completion of the approved scope of work by the current approved project deadline. Please be advised FEMA and Cal OES will examine these requests closely and time extensions will only be approved for extenuating circumstances. To assist you in determining whether your agency requires a time extension, please refer to the following time limitations for the completion of work associated with this disaster:

DR-4699 Emergency Work Deadlines (Categories A and B)		DR-4699 Permanent Work Deadlines (Categories C-G)	
Regulatory Deadline	Cal OES Time Extension Authority	Regulatory Deadline	Cal OES Time Extension Authority
October 3, 2023	April 3, 2024	October 3, 2024	April 3, 2027

As delineated in the table above, Cal OES is able to grant time extensions for approved (obligated) projects through April 3, 2024, for emergency work and April 3, 2027, for permanent work. FEMA must approve time extensions for any project that will be completed after these dates. Time extension requests must include a full explanation of the extenuating circumstances causing the delay, PW number, category of work, construction schedule, estimated project completion date, as well as dates and provision of previously approved time extensions. Time extension requests should be submitted to Cal OES prior to the established deadline.

Compliance with Federal, State, and Local Environmental and Historical Laws

Initiating a project prior to FEMA's review for compliance with federal environmental and historic laws and executive orders may result in jeopardizing funding. FEMA will complete any required documentation and interagency consultations. Subrecipients must obtain all necessary permits required for all projects, and must comply with any federal, state, or local environmental and historic laws or permit requirements.

Change in Scope of Work or Additional Funding

Any change to the scope of work and/or significant increase in project funding must be requested in writing through Cal OES. A version to the original PW may be prepared by Cal OES based on the eligible work in the documentation provided with the request. The draft PW will be transmitted by Cal OES to FEMA for approval. It is imperative subrecipients wait for FEMA's approval before initiating any changes to the approved scope of work. Such work may be subject to review for compliance with various federal environmental and historic preservation laws and regulations. Any additional work performed prior to approval by FEMA and completion of these reviews may jeopardize funding for the entire project.

Management Costs

In accordance with FEMA Recovery Policy FP 104-11-2, subrecipients can claim management costs through the PW process for those disasters declared on or after August 1, 2017, for five percent of the total award amount. Management costs include indirect costs, direct administrative costs, and any other administrative expense associated *with a specific project* under a major disaster. These expenses can include, but are not limited to, staff time spent to complete initial, interim, and final inspections; preparing PWs; collecting and organizing documentation; and attending certain meetings with Cal OES and FEMA. In addition, Cal OES will continue to provide a 10 percent administrative allowance on the Cal OES cost-share amount.

Net Small Project Overrun (NSPO) Guidelines

Pursuant to 44 CFR section 206.204(e)(2), a Public Assistance subrecipient may

Procurement

For all approved, federally funded and/or federally financed projects, subrecipients are required to follow the Uniform Administrative Requirements, Cost Principles, and Audit Requirements for Federal Awards, at 2 CFR Part 200, as adopted by the Department of Homeland Security at 2 CFR Part 3002, when using the federal financial assistance to procure property and/or services.

In conclusion, expediting the processing of project worksheets and reimbursements involves a high level of proactive participation. It is imperative you coordinate with your staff and designated Cal OES/FEMA personnel to submit the Damage Inventory and supporting documentation, and conduct site inspections in a timely manner to avoid unnecessary delays in reimbursements, which can ultimately affect your jurisdiction's recovery. If you have any questions related to this correspondence, please contact us at (916) 845-8200 or via email at DisasterRecovery@caloes.ca.gov.

Sincerely,

THE CAL OES RECOVERY TEAM
(916) 845-8200
DisasterRecovery@caloes.ca.gov

cc: Financial Processing Division

kmh

DISTRICT ACTIVITY TO DATE

9/1/2023

WALS Program

- Next week is last scheduled application

Flood Area Activities

- Equipment Usage
 - Airboat
 - Argo
 - Drone

Surveillance

- Trapping
 - Traps Set 2,054 Traps
 - Mosquitoes Collected 55,261 Mosquitoes
 - Mosquitoes Tested 139 Samples Tested
 - Virus
 - Mosquitoes WNV+ 23 ~ S.Visalia, Tulare, Plainview, Woodville, Alpaugh, Allensworth
 - Human WNV+ 2 ~ Tipton
 - Mosquitoes SLE+ 2 ~ Tulare
- CA Arbovirus Surveillance Bulletin
 - See attached.

Service Requests Year to Date

- 2023: 204
- 2022: 185
- 2021: 213
- 2020: 610

California Arbovirus Surveillance Bulletin #21
Week 35 Friday, September 1, 2023



WEEKLY UPDATE

Humans

West Nile virus

A total of 20 human cases of West Nile virus (WNV) were reported this week from 9 counties: Butte (4), Kings (1), Orange (1), Riverside (2), Sacramento (1), San Joaquin (4), Shasta (1), Sutter (2), and Yolo (4). **These are the first human cases of WNV reported from Orange, Shasta, and Sutter counties this year.** In 2023, a total of 75 human cases of WNV have been reported from 21 counties: Butte (10), El Dorado (1), Glenn (2), Kern (1), Kings (2), Lake (4), Los Angeles (2), Madera (1), Merced (2), Orange (1), Riverside (3), Sacramento (10), San Bernardino (7), San Joaquin (6), Santa Clara (1), Shasta (1), Stanislaus (1), Sutter (2), Tulare (8), Yolo (8), and Yuba (2). Of the 75 cases, 53 (71%) had neuroinvasive disease and 5 (7%) were fatal. The median age of the case-patients was 57 years and 46 (61%) of the case-patients were male. The dates of symptom onset ranged from June 30 to Aug 18. In addition to the 75 WNV human cases, 9 asymptomatic WNV-positive blood donors have been reported from 7 counties: Amador (1), Butte (1), Fresno (2), Los Angeles (2), Riverside (1), San Bernardino (1), and Yolo (1). At this time last year, 35 WNV human cases had been reported from 12 counties.

St. Louis encephalitis virus

No cases of St. Louis encephalitis virus (SLEV) were reported this week. In 2023, 1 SLEV human case has been reported from 1 county. At this time last year, 4 SLEV human cases had been reported from 3 counties.

Dead Birds

A total of 89 new WNV positive dead birds were reported this week from 16 counties: Alameda (5), Contra Costa (12), Fresno (1), Lake (1), Los Angeles (5), Nevada (1), Placer (7), Riverside (6), Sacramento (23), San Bernardino (2), San Joaquin (3), Santa Clara (9), Solano (3), Sonoma (2), Stanislaus (1), and Yolo (8). **These are the first WNV positive dead birds reported from Fresno and Nevada counties this year.** In 2023, 443 WNV positive dead birds have been reported from 25 counties. At this time last year, 113 WNV positive dead birds had been reported from 19 counties.

Mosquito Pools

West Nile virus

A total of 364 new WNV positive mosquito pools were identified from 23 counties: Butte (4), Contra Costa (3), Fresno (17), Inyo (1), Kern (4), Lake (7), Los Angeles (38), Madera (52), Merced (11), Orange (15), Placer (12), Riverside (6), Sacramento (25), San Bernardino (15), San Joaquin (51), Santa Clara (4), Shasta (14), Solano (2), Stanislaus (27), Sutter (7), Tulare (29), Yolo (16), and Yuba (4). **This is the first WNV activity reported from Inyo County this year.** In 2023, 3,161 WNV positive mosquito pools have been reported from 29 counties. At this time last year, 2,136 WNV positive mosquito pools had been reported from 25 counties.

St. Louis encephalitis virus

A total of 40 new SLEV positive mosquito pools were identified from 7 counties: Fresno (9), Kern (4), Madera (7), Merced (1), San Joaquin (1), Tulare (17), and Yolo (1). **This is the first SLEV activity reported for Yolo County this year.** In 2023, 302 SLEV positive mosquito pools have been reported from 12 counties. At this time last year, 69 SLEV positive mosquito pools had been reported from 6 counties.

Sentinel Chickens

A total of 21 new WNV positive chickens were reported this week from 8 counties: Butte (5), Colusa (1), Contra Costa (2), Sacramento (3), San Benito (2), Shasta (3), Solano (4), and Yolo (1). In 2023, 119 WNV positive chickens have been reported from 14 counties. At this time last year, 78 WNV positive chickens had been reported from 11 counties.

California Arbovirus Surveillance Bulletin #21
 Week 35 Friday, September 1, 2023

2022 & 2023 YTD West Nile Virus Comparisons		
	2022	2023
Total No. Dead Bird Reports	3,644	4,679
No. Positive Counties	28	37
No. Human Cases	35	75
No. Positive Dead Birds / No. Tested	113 / 963	443 / 1,358
No. Positive Mosquito Pools / No. Tested	2,136 / 27,682	3,161 / 36,583
No. Seroconversions / No. Tested	78 / 3,691	119 / 2,752

YTD WNV Activity by Element and County, 2023					
County	Humans*	Horses	Dead Birds	Mosquito Pools	Sentinel Chickens
Alameda			17	6	
Butte	10	1		56	34
Colusa			2	2	2
Contra Costa			22	11	5
El Dorado	1		1		
Fresno		1	1	154	
Glenn	2			1	
Imperial				3	
Inyo				1	
Kern	1	2		87	
Kings	2	1		47	
Lake	4		3	20	
Los Angeles	2		19	270	
Madera	1		1	155	
Merced	2	1		36	22
Napa		1	1	4	
Nevada			1		1
Orange	1	1		40	
Placer			38	166	
Riverside	3		44	39	
Sacramento	10	1	153	283	5
San Benito					3
San Bernardino	7	1	8	110	
San Joaquin	6		18	504	
San Luis Obispo		2			
San Mateo			1		
Santa Clara	1	1	40	12	
Shasta	1		1	113	3
Solano			11	19	9
Sonoma			4		
Stanislaus	1	2	5	203	
Sutter	2		6	63	17
Tehama					2
Tulare	8		5	456	10
Ventura			3		
Yolo	8		38	275	1
Yuba	2	1		25	5
Totals	75	16	443	3,161	119

*Asymptomatic human infections are not included.

California Arbovirus Surveillance Bulletin #21
 Week 35 Friday, September 1, 2023

YTD SLEV Activity by Element and County, 2023			
County	Humans	Mosquito Pools	Sentinel Chickens
Fresno		62	
Imperial		2	
Inyo		1	
Kern	1	42	
Kings		7	
Madera		13	
Merced		4	
Riverside		101	
San Joaquin		3	
Stanislaus		4	
Tulare		62	
Yolo		1	
Totals	1	302	0

TESTING SUMMARIES

		WNV	SLEV	WEEV
Human Cases	Week	20	0	0
	YTD	75	1	0

		Positive / Total Tested					
		WNV	SLEV	WEEV	CHIK	DENV	ZIKA
Dead Birds	Week	89 / 121					
	YTD	443 / 1,358					
Chicken Sera	Week	21 / 135	0 / 135	0 / 135			
	YTD	119 / 2,752	0 / 2,752	0 / 2,752			
Mosquito Pools	Week	364 / 1,697	40 / 1,557	0 / 1,557	0 / 38	0 / 38	0 / 38
	YTD	3,161 / 36,583	302 / 33,067	0 / 33,067	0 / 424	0 / 424	0 / 424

California Arbovirus Surveillance Bulletin #21
 Week 35 Friday, September 1, 2023

NEW POSITIVES

Dead Birds

County	Agency	City	Zip Code	Species	Date Reported	Virus
Alameda	Alameda Co MAD	Alameda	94501	American Crow	8/30/2023	WNV
Alameda	Alameda Co MAD	Livermore	94550	American Crow	8/28/2023	WNV
Alameda	Alameda Co MAD	Livermore	94550	American Crow	8/29/2023	WNV
Alameda	Alameda Co MAD	Livermore	94550	American Crow	8/30/2023	WNV
Alameda	Alameda Co MAD	newark	94560	American Crow	8/30/2023	WNV
Contra Costa	Contra Costa MVCD	Alamo	94507	Red-shouldered Hawk	8/28/2023	WNV
Contra Costa	Contra Costa MVCD	Brentwood	94513	American Crow	8/11/2023	WNV
Contra Costa	Contra Costa MVCD	Concord	94520	American Crow	8/25/2023	WNV
Contra Costa	Contra Costa MVCD	Concord	94521	American Crow	8/26/2023	WNV
Contra Costa	Contra Costa MVCD	Concord	94520	American Crow	8/28/2023	WNV
Contra Costa	Contra Costa MVCD	Concord	94518	California Scrub-Jay	8/28/2023	WNV
Contra Costa	Contra Costa MVCD	Concord	94520	American Crow	8/28/2023	WNV
Contra Costa	Contra Costa MVCD	El Cerrito	94530	California Scrub-Jay	8/26/2023	WNV
Contra Costa	Contra Costa MVCD	Martinez	94553	American Crow	8/25/2023	WNV
Contra Costa	Contra Costa MVCD	Pleasant Hill	94523	American Crow	8/26/2023	WNV
Contra Costa	Contra Costa MVCD	Walnut Creek	94598	American Crow	8/28/2023	WNV
Contra Costa	Contra Costa MVCD	Walnut Creek	94596	American Crow	8/28/2023	WNV
Fresno	Fresno MVCD	Fresno	93704	Great Horned Owl	8/21/2023	WNV
Lake	Lake Co VCD	Lakeport	95453	Green Heron	8/28/2023	WNV
Los Angeles	Greater Los Angeles Co VCD	Canoga Park	91303	House Finch	8/22/2023	WNV
Los Angeles	Greater Los Angeles Co VCD	Tujunga	91042	American Crow	8/25/2023	WNV
Los Angeles	San Gabriel Valley MVCD	Covina	91724	American Crow	8/21/2023	WNV
Los Angeles	San Gabriel Valley MVCD	Glendora	91741	Unknown - Crow or Raven	8/31/2023	WNV
Los Angeles	San Gabriel Valley MVCD	San Dimas	91773	Lesser Goldfinch	8/31/2023	WNV
Nevada	Nevada Co Env Health - Nevada City	Grass Valley	95945	American Crow	8/21/2023	WNV
Placer	Placer MVCD	Lincoln	95648	Red-shouldered Hawk	8/22/2023	WNV
Placer	Placer MVCD	Loomis	95650	Other	8/28/2023	WNV
Placer	Placer MVCD	Roseville	95747	House Finch	8/23/2023	WNV
Placer	Placer MVCD	Roseville	95747	Mourning Dove	8/23/2023	WNV
Placer	Placer MVCD	Roseville	95747	House Finch	8/27/2023	WNV
Placer	Placer MVCD	Roseville	95747	House Finch	8/27/2023	WNV
Placer	Placer MVCD	Roseville	95678	Western Wood Pewee	8/28/2023	WNV
Riverside	Northwest Mosquito VCD	Corona	92881	European Starling	8/25/2023	WNV
Riverside	Northwest Mosquito VCD	Murrieta	92562	American Crow	8/22/2023	WNV
Riverside	Northwest Mosquito VCD	Murrieta	92562	American Crow	8/22/2023	WNV
Riverside	Northwest Mosquito VCD	Norco	92860	American Crow	8/21/2023	WNV
Riverside	Northwest Mosquito VCD	Norco	92860	Brewer's Blackbird	8/22/2023	WNV
Riverside	Northwest Mosquito VCD	Norco	92860	Common Raven	8/24/2023	WNV
Sacramento	Sacramento-Yolo MVCD	Antelope	95843	Northern Mockingbird	8/26/2023	WNV
Sacramento	Sacramento-Yolo MVCD	Carmichael	95608	House Finch	8/23/2023	WNV
Sacramento	Sacramento-Yolo MVCD	Elk Grove	95758	American Crow	8/21/2023	WNV
Sacramento	Sacramento-Yolo MVCD	Elk Grove	95624	American Crow	8/21/2023	WNV
Sacramento	Sacramento-Yolo MVCD	Elverta	95626	California Scrub-Jay	8/21/2023	WNV
Sacramento	Sacramento-Yolo MVCD	Galt	95632	American Crow	8/28/2023	WNV
Sacramento	Sacramento-Yolo MVCD	Orangevale	95662	California Scrub-Jay	8/28/2023	WNV
Sacramento	Sacramento-Yolo MVCD	Rancho Cordova	95670	American Robin	8/26/2023	WNV
Sacramento	Sacramento-Yolo MVCD	Rio Linda	95673	Yellow-billed Magpie	8/22/2023	WNV
Sacramento	Sacramento-Yolo MVCD	Sacramento	95819	American Crow	8/21/2023	WNV
Sacramento	Sacramento-Yolo MVCD	Sacramento	95819	American Crow	8/22/2023	WNV
Sacramento	Sacramento-Yolo MVCD	Sacramento	95816	Mourning Dove	8/23/2023	WNV
Sacramento	Sacramento-Yolo MVCD	Sacramento	95841	California Scrub-Jay	8/24/2023	WNV
Sacramento	Sacramento-Yolo MVCD	Sacramento	95842	House Finch	8/28/2023	WNV
Sacramento	Sacramento-Yolo MVCD	Sacramento	95825	American Crow	8/28/2023	WNV
Sacramento	Sacramento-Yolo MVCD	Sacramento	95831	American Crow	8/28/2023	WNV
Sacramento	Sacramento-Yolo MVCD	Sacramento	95832	California Scrub-Jay	8/28/2023	WNV
Sacramento	Sacramento-Yolo MVCD	Sacramento	95818	American Crow	8/28/2023	WNV
Sacramento	Sacramento-Yolo MVCD	Sacramento	95818	American Crow	8/28/2023	WNV
Sacramento	Sacramento-Yolo MVCD	Sacramento	95818	American Crow	8/28/2023	WNV
Sacramento	Sacramento-Yolo MVCD	Sacramento	95822	California Scrub-Jay	8/28/2023	WNV
Sacramento	Sacramento-Yolo MVCD	Sacramento	95818	American Crow	8/29/2023	WNV
Sacramento	Sacramento-Yolo MVCD	Sacramento	95818	American Crow	8/29/2023	WNV
Sacramento	Sacramento-Yolo MVCD	Wilton	95693	White-breasted Nuthatch	8/29/2023	WNV
San Bernardino	West Valley MVCD	Rancho Cucamonga	91739	American Crow	8/30/2023	WNV
San Bernardino	West Valley MVCD	Rancho Cucamonga	91739	American Crow	9/1/2023	WNV

California Arbovirus Surveillance Bulletin #21
Week 35 Friday, September 1, 2023

San Joaquin	San Joaquin Co MVCD	Stockton	95215	Yellow-billed Magpie	8/28/2023	WNV
San Joaquin	San Joaquin Co MVCD	Stockton	95212	American Crow	8/28/2023	WNV
San Joaquin	San Joaquin Co MVCD	Tracy	95376	American Crow	8/28/2023	WNV
Santa Clara	Santa Clara Co VCD	Monte Sereno	95030	American Crow	8/24/2023	WNV
Santa Clara	Santa Clara Co VCD	Palo Alto	94301	American Crow	8/28/2023	WNV
Santa Clara	Santa Clara Co VCD	San Jose	95125	American Crow	8/26/2023	WNV
Santa Clara	Santa Clara Co VCD	San Jose	95139	American Crow	8/28/2023	WNV
Santa Clara	Santa Clara Co VCD	San Jose	95124	American Crow	8/29/2023	WNV
Santa Clara	Santa Clara Co VCD	San Jose	95125	American Crow	8/29/2023	WNV
Santa Clara	Santa Clara Co VCD	San Jose	95121	California Scrub-Jay	8/29/2023	WNV
Santa Clara	Santa Clara Co VCD	Santa Clara	95051	House Wren	8/24/2023	WNV
Santa Clara	Santa Clara Co VCD	Santa Clara	95050	American Crow	8/29/2023	WNV
Solano	Solano Co MAD	Davis	95618	American Crow	8/28/2023	WNV
Solano	Solano Co MAD	Fairfield	94534	California Scrub-Jay	8/30/2023	WNV
Solano	Solano Co MAD	Vacaville	95688	American Crow	8/22/2023	WNV
Sonoma	Marin-Sonoma MVCD	Petaluma	94954	American Crow	8/27/2023	WNV
Sonoma	Marin-Sonoma MVCD	Santa Rosa	95401	American Crow	8/24/2023	WNV
Stanislaus	East Side MAD	Riverbank	95367	Yellow-billed Magpie	8/24/2023	WNV
Yolo	Sacramento-Yolo MVCD	Capay	95607	House Finch	8/25/2023	WNV
Yolo	Sacramento-Yolo MVCD	Davis	95618	American Crow	8/21/2023	WNV
Yolo	Sacramento-Yolo MVCD	Davis	95616	American Crow	8/24/2023	WNV
Yolo	Sacramento-Yolo MVCD	Davis	95616	American Crow	8/25/2023	WNV
Yolo	Sacramento-Yolo MVCD	Davis	95616	American Crow	8/28/2023	WNV
Yolo	Sacramento-Yolo MVCD	Davis	95616	American Crow	8/28/2023	WNV
Yolo	Sacramento-Yolo MVCD	West Sacramento	95691	California Scrub-Jay	8/29/2023	WNV
Yolo	Sacramento-Yolo MVCD	Woodland	95695	Northern Mockingbird	8/25/2023	WNV

Mosquito Pools

County	Site Code	Pool #	Species	City	# in Pool	Trap	Collected	Virus
Butte	BUCO 123	422	Cx tarsalis	Oroville	50	CO2	8/23/2023	WNV
Butte	BUCO 141	417	Cx tarsalis	Oroville	50	CO2	8/21/2023	WNV
Butte	BUCO 141	418	Cx tarsalis	Oroville	50	CO2	8/21/2023	WNV
Butte	BUCO 37	416	Cx tarsalis	Honcut	49	CO2	8/21/2023	WNV
Contra Costa	CNTR 2302	1083	Cx tarsalis	Martinez	50	CO2	8/29/2023	WNV
Contra Costa	CNTR 8152	1101	Cx tarsalis	Knightsen	11	CO2	8/29/2023	WNV
Contra Costa	CNTR 8202	1062	Cx tarsalis	Discovery Bay	31	CO2	8/29/2023	WNV
Fresno	CNSL 1068	712	Cx tarsalis	Fresno	50	CO2	8/23/2023	SLEV
Fresno	CNSL 1242	251	Cx quinquefasciatus	Fresno	32	GRVD	8/23/2023	SLEV
Fresno	CNSL 1791	709	Cx quinquefasciatus	Fresno	43	GRVD	8/23/2023	WNV
Fresno	CNSL 2291	714	Cx tarsalis	Del Rey	32	CO2	8/25/2023	WNV
Fresno	CNSL 2291	714	Cx tarsalis	Del Rey	32	CO2	8/25/2023	SLEV
Fresno	CNSL 3524	246	Cx quinquefasciatus	Kingsburg	50	GRVD	8/22/2023	WNV
Fresno	CNSL 3524	246	Cx quinquefasciatus	Kingsburg	50	GRVD	8/22/2023	SLEV
Fresno	CNSL 4064	245	Cx quinquefasciatus	Selma	50	GRVD	8/22/2023	WNV
Fresno	CNSL 4088	244	Cx quinquefasciatus	Selma	22	GRVD	8/22/2023	WNV
Fresno	CNSL 4129	257	Cx quinquefasciatus	Selma	31	GRVD	8/25/2023	WNV
Fresno	CNSL 4298	242	Cx quinquefasciatus	Fresno	25	GRVD	8/22/2023	WNV
Fresno	CNSL 4298	243	Cx tarsalis	Fresno	50	CO2	8/22/2023	WNV
Fresno	CNSL 4298	243	Cx tarsalis	Fresno	50	CO2	8/22/2023	SLEV
Fresno	CNSL 4358	241	Cx quinquefasciatus	Fowler	44	GRVD	8/22/2023	SLEV
Fresno	CNSL 5029	708	Cx quinquefasciatus	Kingsburg	25	GRVD	8/23/2023	WNV
Fresno	CNSL 5029	708	Cx quinquefasciatus	Kingsburg	25	GRVD	8/23/2023	SLEV
Fresno	CNSL 5044	247	Cx quinquefasciatus	Kingsburg	50	GRVD	8/23/2023	WNV
Fresno	CNSL 9194	710	Cx quinquefasciatus	Clovis	34	GRVD	8/23/2023	WNV
Fresno	CNSL 9242	254	Cx quinquefasciatus	Clovis	50	GRVD	8/24/2023	SLEV
Fresno	FRWS 1101	361	Cx tarsalis	Dos Palos	50	CO2	8/29/2023	WNV
Fresno	FRWS 1202	360	Cx tarsalis	Dos Palos	50	CO2	8/29/2023	WNV
Fresno	FRWS 300031	357	Cx tarsalis	Firebaugh	31	CO2	8/29/2023	WNV
Fresno	FRWS 300034	352	Cx tarsalis	Firebaugh	50	BGSENT	8/24/2023	WNV
Fresno	FRWS 300064	355	Cx tarsalis	Firebaugh	50	BGSENT	8/24/2023	WNV
Fresno	FRWS 4102	366	Cx tarsalis	Kerman	38	CO2	8/29/2023	SLEV
Fresno	FRWS 4110	362	Cx tarsalis	Mendota	20	CO2	8/29/2023	WNV
Inyo	INYO 1035	61	Cx tarsalis	Bishop	50	CO2-EVS	8/29/2023	WNV
Kern	DLNO 102	294	Cx quinquefasciatus	Mcfarland	43	GRVD	8/29/2023	WNV
Kern	DLNO 149	296	Cx quinquefasciatus	Delano	17	GRVD	8/29/2023	WNV
Kern	DLNO 166	293	Cx quinquefasciatus	Delano	15	GRVD	8/29/2023	SLEV
Kern	DLNO 28	288	Cx quinquefasciatus	Mcfarland	30	BGSENT	8/24/2023	WNV
Kern	DLNO 34	287	Cx quinquefasciatus	Mcfarland	21	BGSENT	8/24/2023	SLEV

California Arbovirus Surveillance Bulletin #21
Week 35 Friday, September 1, 2023

Kern	KERN 1011	1172	Cx tarsalis	Bakersfield	50	CO2	8/25/2023	SLEV
Kern	KERN 1160	1170	Cx quinquefasciatus	Shafter	37	CO2	8/24/2023	WNV
Kern	WEST 6208	58	Cx tarsalis	Bakersfield	15	CO2	8/23/2023	SLEV
Lake	LAKE 201	333	Cx tarsalis	Cobb	8	CO2	8/23/2023	WNV
Lake	LAKE 225	334	Cx tarsalis	Lower Lake	29	CO2	8/24/2023	WNV
Lake	LAKE 250	352	Cx tarsalis	Lakeport	50	CO2	8/29/2023	WNV
Lake	LAKE 293	349	Cx tarsalis	Lakeport	50	CO2	8/29/2023	WNV
Lake	LAKE 328	353	Cx tarsalis	Upper Lake	24	CO2	8/29/2023	WNV
Lake	LAKE 367	354	Cx tarsalis	Kelseyville	50	CO2	8/29/2023	WNV
Lake	LAKE 80	361	Cx tarsalis	Upper Lake	36	CO2	8/29/2023	WNV
Los Angeles	GRLA 2007	5645	Cx quinquefasciatus	Toluca Lake	40	GRVD	8/24/2023	WNV
Los Angeles	GRLA 2017	5646	Cx quinquefasciatus	Studio City	40	GRVD	8/24/2023	WNV
Los Angeles	GRLA 2101	635	Cx quinquefasciatus	Santa Fe Springs	16	GRVD	8/24/2023	WNV
Los Angeles	GRLA 2194	626	Cx quinquefasciatus	South El Monte	50	GRVD	8/23/2023	WNV
Los Angeles	GRLA 2247	648	Cx quinquefasciatus	Pico Rivera	47	GRVD	8/24/2023	WNV
Los Angeles	GRLA 2268	643	Cx quinquefasciatus	Cerritos	48	GRVD	8/24/2023	WNV
Los Angeles	GRLA 2383	634	Cx quinquefasciatus	Whittier	45	GRVD	8/23/2023	WNV
Los Angeles	GRLA 2476	5657	Cx quinquefasciatus	Sunland	50	GRVD	8/25/2023	WNV
Los Angeles	GRLA 2478	5661	Cx quinquefasciatus	Sunland	39	GRVD	8/25/2023	WNV
Los Angeles	GRLA 2547	5654	Cx quinquefasciatus	Sylmar	34	GRVD	8/25/2023	WNV
Los Angeles	GRLA 2550	5663	Cx quinquefasciatus	Mission Hills	33	GRVD	8/25/2023	WNV
Los Angeles	GRLA 2952	636	Cx quinquefasciatus	South Whittier(La County)	18	GRVD	8/24/2023	WNV
Los Angeles	GRLA 2953	639	Cx quinquefasciatus	Santa Fe Springs	45	GRVD	8/24/2023	WNV
Los Angeles	GRLA 3027	5643	Cx quinquefasciatus	Studio City	50	GRVD	8/24/2023	WNV
Los Angeles	GRLA 3038	5649	Cx quinquefasciatus	Valley Village	50	GRVD	8/24/2023	WNV
Los Angeles	GRLA 3040	638	Cx quinquefasciatus	La Mirada	50	GRVD	8/24/2023	WNV
Los Angeles	GRLA 3041	642	Cx quinquefasciatus	Artesia	36	GRVD	8/24/2023	WNV
Los Angeles	GRLA 3060	640	Cx quinquefasciatus	Norwalk	12	BGSENT	8/24/2023	WNV
Los Angeles	GRLA 3061	650	Cx quinquefasciatus	Los Angeles	50	GRVD	8/25/2023	WNV
Los Angeles	GRLA 3066	5651	Cx quinquefasciatus	Valley Glen	50	GRVD	8/24/2023	WNV
Los Angeles	GRLA 3069	5648	Cx quinquefasciatus	Valley Village	33	GRVD	8/24/2023	WNV
Los Angeles	GRLA 3079	5653	Cx quinquefasciatus	Sun Valley	44	GRVD	8/24/2023	WNV
Los Angeles	GRLA 3080	5650	Cx quinquefasciatus	North Hollywood	50	GRVD	8/24/2023	WNV
Los Angeles	GRLA 3102	5647	Cx quinquefasciatus	Studio City	50	GRVD	8/24/2023	WNV
Los Angeles	SGVA 1070	612	Cx quinquefasciatus	Bradbury	20	GRVD	8/29/2023	WNV
Los Angeles	SGVA 1077	593	Cx quinquefasciatus	La Puente	50	GRVD	8/30/2023	WNV
Los Angeles	SGVA 1119	617	Cx quinquefasciatus	La Verne	39	GRVD	8/30/2023	WNV
Los Angeles	SGVA 1291	615	Cx quinquefasciatus	West Covina	50	GRVD	8/31/2023	WNV
Los Angeles	SGVA 1292	624	Cx quinquefasciatus	Covina	23	GRVD	8/31/2023	WNV
Los Angeles	SGVA 1293	614	Cx quinquefasciatus	West Covina	43	GRVD	8/31/2023	WNV
Los Angeles	SGVA 1294	616	Cx quinquefasciatus	West Covina	37	GRVD	8/31/2023	WNV
Los Angeles	SGVA 1299	606	Cx quinquefasciatus	Glendora	29	GRVD	8/30/2023	WNV
Los Angeles	SGVA 448	596	Cx quinquefasciatus	La Verne	28	GRVD	8/29/2023	WNV
Los Angeles	SGVA 477	592	Cx quinquefasciatus	West Covina	21	GRVD	8/30/2023	WNV
Los Angeles	SGVA 650	602	Cx quinquefasciatus	Pomona	31	GRVD	8/29/2023	WNV
Los Angeles	SGVA 7	600	Cx quinquefasciatus	Claremont	29	GRVD	8/29/2023	WNV
Los Angeles	SGVA 915	609	Cx quinquefasciatus	San Dimas	38	GRVD	8/30/2023	WNV
Los Angeles	SGVA 965	598	Cx quinquefasciatus	Claremont	50	GRVD	8/29/2023	WNV
Madera	MADR 1057	364	Cx quinquefasciatus	Chowchilla	50	CO2	8/18/2023	WNV
Madera	MADR 1057	365	Cx tarsalis	Chowchilla	49	CO2	8/18/2023	WNV
Madera	MADR 12	406	Cx tarsalis	Madera	49	CO2	8/24/2023	WNV
Madera	MADR 195	410	Cx quinquefasciatus	Madera	25	CO2	8/24/2023	WNV
Madera	MADR 195	410	Cx quinquefasciatus	Madera	25	CO2	8/24/2023	SLEV
Madera	MADR 195	411	Cx tarsalis	Madera	50	CO2	8/24/2023	WNV
Madera	MADR 198	409	Cx tarsalis	Madera	50	CO2	8/24/2023	WNV
Madera	MADR 208	352	Cx quinquefasciatus	Madera	50	CO2	8/17/2023	WNV
Madera	MADR 208	353	Cx tarsalis	Madera	50	CO2	8/17/2023	WNV
Madera	MADR 208	416	Cx quinquefasciatus	Madera	50	CO2	8/24/2023	WNV
Madera	MADR 227	386	Cx quinquefasciatus	Madera	23	CO2	8/22/2023	WNV
Madera	MADR 227	387	Cx tarsalis	Madera	27	CO2	8/22/2023	WNV
Madera	MADR 259	354	Cx quinquefasciatus	Madera	35	CO2	8/17/2023	WNV
Madera	MADR 259	355	Cx tarsalis	Madera	40	CO2	8/17/2023	WNV
Madera	MADR 259	356	Cx quinquefasciatus	Madera	48	CO2	8/17/2023	WNV
Madera	MADR 259	357	Cx tarsalis	Madera	50	CO2	8/17/2023	WNV
Madera	MADR 259	395	Cx tarsalis	Madera	13	CO2	8/23/2023	WNV
Madera	MADR 259	396	Cx quinquefasciatus	Madera	20	CO2	8/23/2023	WNV
Madera	MADR 259	396	Cx quinquefasciatus	Madera	20	CO2	8/23/2023	SLEV
Madera	MADR 298	367	Cx tarsalis	Chowchilla	50	CO2	8/18/2023	WNV
Madera	MADR 299	370	Cx quinquefasciatus	Chowchilla	50	CO2	8/18/2023	WNV

California Arbovirus Surveillance Bulletin #21
Week 35 Friday, September 1, 2023

Madera	MADR 311	421	Cx tarsalis	Madera	5	CO2	8/25/2023	WNV
Madera	MADR 3334	383	Cx tarsalis	Madera	50	CO2	8/22/2023	WNV
Madera	MADR 3334	383	Cx tarsalis	Madera	50	CO2	8/22/2023	SLEV
Madera	MADR 581	359	Cx quinquefasciatus	Madera	28	CO2	8/17/2023	WNV
Madera	MADR 581	360	Cx tarsalis	Madera	39	CO2	8/17/2023	WNV
Madera	MADR 581	361	Cx quinquefasciatus	Madera	50	CO2	8/17/2023	WNV
Madera	MADR 581	362	Cx tarsalis	Madera	50	CO2	8/17/2023	WNV
Madera	MADR 581	388	Cx quinquefasciatus	Madera	50	CO2	8/23/2023	WNV
Madera	MADR 581	389	Cx tarsalis	Madera	50	CO2	8/23/2023	WNV
Madera	MADR 581	390	Cx quinquefasciatus	Madera	50	CO2	8/23/2023	WNV
Madera	MADR 581	391	Cx tarsalis	Madera	50	CO2	8/23/2023	WNV
Madera	MADR 688	358	Cx tarsalis	Madera	50	CO2	8/17/2023	WNV
Madera	MADR 688	392	Cx quinquefasciatus	Madera	50	CO2	8/23/2023	WNV
Madera	MADR 688	393	Cx quinquefasciatus	Madera	25	CO2	8/23/2023	WNV
Madera	MADR 688	394	Cx tarsalis	Madera	18	CO2	8/23/2023	WNV
Madera	MADR 688	398	Cx tarsalis	Madera	41	CO2	8/23/2023	WNV
Madera	MADR 688	398	Cx tarsalis	Madera	41	CO2	8/23/2023	SLEV
Madera	MADR 690	347	Cx quinquefasciatus	Madera	30	CO2	8/16/2023	WNV
Madera	MADR 697	373	Cx tarsalis	Firebaugh	38	CO2	8/18/2023	WNV
Madera	MADR 704	348	Cx quinquefasciatus	Madera	50	CO2	8/16/2023	WNV
Madera	MADR 704	349	Cx tarsalis	Madera	50	CO2	8/16/2023	WNV
Madera	MADR 704	351	Cx tarsalis	Madera	50	CO2	8/16/2023	WNV
Madera	MADR 704	413	Cx tarsalis	Madera	40	CO2	8/24/2023	WNV
Madera	MADR 704	414	Cx quinquefasciatus	Madera	46	CO2	8/24/2023	WNV
Madera	MADR 704	415	Cx tarsalis	Madera	50	CO2	8/24/2023	WNV
Madera	MADR 706	407	Cx tarsalis	Madera	19	CO2	8/24/2023	WNV
Madera	MADR 714	427	Cx quinquefasciatus	Madera	27	BGSENT	8/24/2023	WNV
Madera	MADR 714	429	Cx quinquefasciatus	Madera	16	BGSENT	8/25/2023	WNV
Madera	MADR 714	432	Cx quinquefasciatus	Madera	38	BGSENT	8/18/2023	SLEV
Madera	MADR 725	379	Cx tarsalis	Madera	24	CO2	8/22/2023	WNV
Madera	MADR 726	399	Cx quinquefasciatus	Madera	41	CO2	8/23/2023	WNV
Madera	MADR 726	399	Cx quinquefasciatus	Madera	41	CO2	8/23/2023	SLEV
Madera	MADR 726	400	Cx tarsalis	Madera	50	CO2	8/23/2023	WNV
Madera	MADR 726	401	Cx quinquefasciatus	Madera	41	CO2	8/23/2023	WNV
Madera	MADR 726	401	Cx quinquefasciatus	Madera	41	CO2	8/23/2023	SLEV
Madera	MADR 726	402	Cx tarsalis	Madera	50	CO2	8/23/2023	WNV
Madera	MADR 726	403	Cx quinquefasciatus	Madera	11	CO2	8/23/2023	WNV
Madera	MADR 967	385	Cx tarsalis	Madera	18	CO2	8/22/2023	WNV
Merced	MERC 201502	698	Cx tarsalis	Los Banos	50	CO2	8/30/2023	WNV
Merced	MERC 201502	699	Cx tarsalis	Los Banos	26	CO2	8/30/2023	WNV
Merced	MERC 201740	691	Cx tarsalis	Los Banos	50	CO2	8/30/2023	WNV
Merced	MERC 201740	692	Cx tarsalis	Los Banos	18	CO2	8/30/2023	WNV
Merced	MERC 332727	694	Cx tarsalis	Los Banos	50	CO2	8/30/2023	WNV
Merced	MERC 434962	700	Cx tarsalis	Los Banos	50	CO2	8/30/2023	WNV
Merced	MERC 434962	702	Cx tarsalis	Los Banos	13	CO2	8/30/2023	SLEV
Merced	MERC 596126	701	Cx tarsalis	Los Banos	46	CO2	8/30/2023	WNV
Merced	MERC 596334	693	Cx tarsalis	Los Banos	19	CO2	8/30/2023	WNV
Merced	MERC 858252	679	Cx tarsalis	Dos Palos	12	BGSENT	8/24/2023	WNV
Merced	MERC 964123	688	Cx tarsalis	Gustine	50	BGSENT	8/25/2023	WNV
Merced	MERC 964123	689	Cx tarsalis	Gustine	13	BGSENT	8/25/2023	WNV
Orange	ORCO 1015	3353	Cx quinquefasciatus	Orange	14	GRVD	9/1/2023	WNV
Orange	ORCO 1020	3322	Cx quinquefasciatus	Seal Beach	36	GRVD	8/30/2023	WNV
Orange	ORCO 1042	3328	Cx quinquefasciatus	Yorba Linda	7	GRVD	8/31/2023	WNV
Orange	ORCO 170	3254	Cx quinquefasciatus	Anaheim	33	GRVD	8/29/2023	WNV
Orange	ORCO 217	3262	Cx quinquefasciatus	Santa Ana	9	GRVD	8/29/2023	WNV
Orange	ORCO 218	3255	Cx quinquefasciatus	Anaheim	45	GRVD	8/29/2023	WNV
Orange	ORCO 218	3256	Cx quinquefasciatus	Anaheim	34	GRVD	8/29/2023	WNV
Orange	ORCO 218	3329	Cx quinquefasciatus	Anaheim	9	GRVD	8/31/2023	WNV
Orange	ORCO 29	3319	Cx quinquefasciatus	Santa Ana	25	GRVD	8/30/2023	WNV
Orange	ORCO 29	3320	Cx quinquefasciatus	Santa Ana	26	GRVD	8/30/2023	WNV
Orange	ORCO 306	3279	Cx quinquefasciatus	Villa Park	9	GRVD	8/29/2023	WNV
Orange	ORCO 332	3265	Cx quinquefasciatus	Fullerton	28	GRVD	8/29/2023	WNV
Orange	ORCO 335	3278	Cx quinquefasciatus	Orange	7	GRVD	8/29/2023	WNV
Orange	ORCO 338	3282	Cx quinquefasciatus	Anaheim	32	GRVD	8/29/2023	WNV
Orange	ORCO 365	3318	Cx quinquefasciatus	Huntington Beach	13	GRVD	8/30/2023	WNV
Placer	PLCR 1113	1347	Cx tarsalis	Pleasant Grove	50	CO2	8/30/2023	WNV
Placer	PLCR 139	1325	Cx tarsalis	Roseville	50	CO2	8/29/2023	WNV
Placer	PLCR 139	1328	Cx tarsalis	Roseville	22	CO2	8/29/2023	WNV
Placer	PLCR 17	1311	Cx tarsalis	Sheridan	50	CO2	8/29/2023	WNV

California Arbovirus Surveillance Bulletin #21
Week 35 Friday, September 1, 2023

Placer	PLCR 191218	1304	Cx tarsalis	Roseville	50	CO2	8/29/2023	WNV
Placer	PLCR 191218	1305	Cx tarsalis	Roseville	50	CO2	8/29/2023	WNV
Placer	PLCR 191218	1306	Cx tarsalis	Roseville	49	CO2	8/29/2023	WNV
Placer	PLCR 191998	1302	Cx tarsalis	Lincoln	50	CO2	8/29/2023	WNV
Placer	PLCR 194232	1319	Cx tarsalis	Pleasant Grove	32	CO2	8/29/2023	WNV
Placer	PLCR 198710	1307	Cx tarsalis	Lincoln	30	CO2	8/29/2023	WNV
Placer	PLCR 678519	1314	Cx tarsalis	Elverta	50	CO2	8/29/2023	WNV
Placer	PLCR 678519	1316	Cx tarsalis	Elverta	45	CO2	8/29/2023	WNV
Riverside	COAV 46	4471	Cx tarsalis	Mecca	50	CO2	8/29/2023	WNV
Riverside	COAV 46	4472	Cx tarsalis	Mecca	50	CO2	8/29/2023	WNV
Riverside	NWST 122	190	Cx quinquefasciatus	Corona	50	BGSENT	8/24/2023	WNV
Riverside	NWST 349	182	Cx quinquefasciatus	Corona	50	BGSENT	8/11/2023	WNV
Riverside	NWST 350	186	Cx quinquefasciatus	Riverside	47	GRVD	8/17/2023	WNV
Riverside	NWST 92	188	Cx quinquefasciatus	Lake Elsinore	26	GRVD	8/17/2023	WNV
Sacramento	SAYO 201006	5902	Cx tarsalis	Sacramento	50	CO2	8/29/2023	WNV
Sacramento	SAYO 203011	5776	Cx pipiens	Antelope	13	GRVD	8/25/2023	WNV
Sacramento	SAYO 203027	5778	Cx tarsalis	Sacramento	25	CO2	8/25/2023	WNV
Sacramento	SAYO 212004	5990	Cx pipiens	Sacramento	12	GRVD	8/29/2023	WNV
Sacramento	SAYO 212033	6006	Cx pipiens	Sacramento, Ca	18	CO2	8/29/2023	WNV
Sacramento	SAYO 213009	5982	Cx pipiens	Sacramento	2	CO2	8/29/2023	WNV
Sacramento	SAYO 214049	5980	Cx tarsalis	Carmichael	27	CO2	8/29/2023	WNV
Sacramento	SAYO 215005	5798	Cx pipiens	Folsom	1	CO2	8/25/2023	WNV
Sacramento	SAYO 215005	5800	Cx pipiens	Folsom	37	GRVD	8/25/2023	WNV
Sacramento	SAYO 223044	5772	Cx tarsalis	Sacramento	2	CO2	8/25/2023	WNV
Sacramento	SAYO 224012	5794	Cx tarsalis	Rancho Cordova	2	GRVD	8/25/2023	WNV
Sacramento	SAYO 232012	6011	Cx tarsalis	Elk Grove	3	CO2	8/29/2023	WNV
Sacramento	SAYO 232031	5709	Cx tarsalis	Elk Grove	40	CO2	8/25/2023	WNV
Sacramento	SAYO 242003	5724	Cx pipiens	Elk Grove	11	GRVD	8/25/2023	WNV
Sacramento	SAYO 242004	5712	Cx pipiens	Elk Grove	2	CO2	8/25/2023	WNV
Sacramento	SAYO 242004	5714	Cx tarsalis	Elk Grove	8	CO2	8/25/2023	WNV
Sacramento	SAYO 243009	5997	Cx pipiens	Elk Grove	18	GRVD	8/29/2023	WNV
Sacramento	SAYO 253014	5732	Cx tarsalis	Galt	46	CO2	8/25/2023	WNV
Sacramento	SAYO 255007	5762	Cx pipiens	Herald	49	CO2	8/25/2023	WNV
Sacramento	SAYO 271007	5755	Cx tarsalis	Isleton	29	CO2	8/25/2023	WNV
Sacramento	SAYO 366381	5812	Cx pipiens	Sacramento	1	BGSENT	8/25/2023	WNV
Sacramento	SAYO 390941	5921	Cx tarsalis	South Sacramento	50	CO2	8/29/2023	WNV
Sacramento	SAYO 413916	5823	Cx pipiens	Sacramento	12	BGSENT	8/25/2023	WNV
Sacramento	SAYO 413918	5824	Cx pipiens	Elk Grove	19	BGSENT	8/25/2023	WNV
Sacramento	SAYO 413918	5825	Cx tarsalis	Elk Grove	12	BGSENT	8/25/2023	WNV
San Bernardino	SANB 150	268	Cx quinquefasciatus	Colton	14	CO2	8/22/2023	WNV
San Bernardino	SANB 37	263	Cx tarsalis	San Bernardino	50	CO2	8/19/2023	WNV
San Bernardino	SANB 37	264	Cx tarsalis	San Bernardino	50	CO2	8/19/2023	WNV
San Bernardino	SANB 37	274	Cx tarsalis	San Bernardino	50	CO2	8/24/2023	WNV
San Bernardino	SANB 37	275	Cx tarsalis	San Bernardino	50	CO2	8/24/2023	WNV
San Bernardino	SANB 37	277	Cx tarsalis	San Bernardino	50	CO2	8/24/2023	WNV
San Bernardino	SANB 37	278	Cx tarsalis	San Bernardino	31	CO2	8/24/2023	WNV
San Bernardino	SANB 37	281	Cx tarsalis	San Bernardino	50	CO2	8/25/2023	WNV
San Bernardino	SANB 37	283	Cx tarsalis	San Bernardino	24	CO2	8/25/2023	WNV
San Bernardino	WVAL 1089	1847	Cx quinquefasciatus	Montclair	9	BGSENT	8/31/2023	WNV
San Bernardino	WVAL 1116	1874	Cx quinquefasciatus	Rancho Cucamonga	5	BGSENT	8/31/2023	WNV
San Bernardino	WVAL 4564	1794	Cx quinquefasciatus	Ontario	13	BGSENT	8/29/2023	WNV
San Bernardino	WVAL 4932	1870	Cx quinquefasciatus	Ontario	5	BGSENT	8/31/2023	WNV
San Bernardino	WVAL 5456	1850	Cx quinquefasciatus	Chino	16	BGSENT	8/31/2023	WNV
San Bernardino	WVAL 6013	1876	Cx quinquefasciatus	Ontario	39	BGSENT	8/31/2023	WNV
San Joaquin	SJCM 7021	2411	Cx pipiens	Stockton	15	GRVD	8/29/2023	WNV
San Joaquin	SJCM 7028	2488	Cx tarsalis	Lodi	16	CO2	8/31/2023	WNV
San Joaquin	SJCM 7028	2489	Cx pipiens	Lodi	17	CO2	8/31/2023	WNV
San Joaquin	SJCM 8004	2454	Cx tarsalis	Lodi	37	CO2	8/29/2023	WNV
San Joaquin	SJCM 8004	2455	Cx pipiens	Lodi	20	CO2	8/29/2023	WNV
San Joaquin	SJCM 8008	2401	Cx tarsalis	Manteca	50	CO2	8/29/2023	WNV
San Joaquin	SJCM 8008	2402	Cx tarsalis	Manteca	50	CO2	8/29/2023	WNV
San Joaquin	SJCM 8008	2403	Cx tarsalis	Manteca	30	CO2	8/29/2023	WNV
San Joaquin	SJCM 8009	2436	Cx tarsalis	Stockton	50	CO2	8/29/2023	WNV
San Joaquin	SJCM 8010	2386	Cx pipiens	Ripon	20	CO2	8/29/2023	WNV
San Joaquin	SJCM 8018	2423	Cx tarsalis	Stockton	50	CO2	8/29/2023	WNV
San Joaquin	SJCM 8018	2424	Cx tarsalis	Stockton	50	CO2	8/29/2023	WNV
San Joaquin	SJCM 8018	2425	Cx tarsalis	Stockton	50	CO2	8/29/2023	WNV
San Joaquin	SJCM 8027	2440	Cx tarsalis	Stockton	50	CO2	8/29/2023	WNV
San Joaquin	SJCM 8027	2442	Cx tarsalis	Stockton	22	CO2	8/29/2023	WNV

California Arbovirus Surveillance Bulletin #21
Week 35 Friday, September 1, 2023

San Joaquin	SJCM 8032	2522	Cx pipiens	Escalon	50	CO2	8/31/2023	WNV
San Joaquin	SJCM 8047	2503	Cx pipiens	Stockton	8	CO2	8/31/2023	WNV
San Joaquin	SJCM 8076	2457	Cx pipiens	Stockton	5	CO2	8/29/2023	WNV
San Joaquin	SJCM 8083	2412	Cx tarsalis	Escalon	50	CO2	8/29/2023	WNV
San Joaquin	SJCM 8083	2413	Cx tarsalis	Escalon	16	CO2	8/29/2023	WNV
San Joaquin	SJCM 8083	2414	Cx pipiens	Escalon	50	CO2	8/29/2023	WNV
San Joaquin	SJCM 8083	2415	Cx pipiens	Escalon	27	CO2	8/29/2023	WNV
San Joaquin	SJCM 8160	2475	Cx tarsalis	Lodi	50	CO2	8/29/2023	WNV
San Joaquin	SJCM 8160	2476	Cx tarsalis	Lodi	50	CO2	8/29/2023	WNV
San Joaquin	SJCM 8160	2477	Cx tarsalis	Lodi	50	CO2	8/29/2023	WNV
San Joaquin	SJCM 8161	2397	Cx tarsalis	Ripon	48	CO2	8/29/2023	WNV
San Joaquin	SJCM 8161	2398	Cx pipiens	Ripon	51	CO2	8/29/2023	WNV
San Joaquin	SJCM 8161	2398	Cx pipiens	Ripon	51	CO2	8/29/2023	SLEV
San Joaquin	SJCM 8199	2393	Cx tarsalis	Manteca	50	CO2	8/29/2023	WNV
San Joaquin	SJCM 8204	2462	Cx tarsalis	Stockton	50	CO2	8/29/2023	WNV
San Joaquin	SJCM 8204	2463	Cx tarsalis	Stockton	50	CO2	8/29/2023	WNV
San Joaquin	SJCM 8204	2464	Cx tarsalis	Stockton	50	CO2	8/29/2023	WNV
San Joaquin	SJCM 8204	2465	Cx tarsalis	Stockton	50	CO2	8/29/2023	WNV
San Joaquin	SJCM 8204	2466	Cx tarsalis	Stockton	50	CO2	8/29/2023	WNV
San Joaquin	SJCM 8204	2467	Cx pipiens	Stockton	50	CO2	8/29/2023	WNV
San Joaquin	SJCM 8206	2469	Cx tarsalis	Lodi	100	CO2	8/29/2023	WNV
San Joaquin	SJCM 8206	2470	Cx tarsalis	Lodi	100	CO2	8/29/2023	WNV
San Joaquin	SJCM 8206	2471	Cx tarsalis	Lodi	100	CO2	8/29/2023	WNV
San Joaquin	SJCM 8206	2472	Cx tarsalis	Lodi	34	CO2	8/29/2023	WNV
San Joaquin	SJCM 8208	2499	Cx tarsalis	Lodi	50	CO2	8/31/2023	WNV
San Joaquin	SJCM 8208	2501	Cx pipiens	Lodi	42	CO2	8/31/2023	WNV
San Joaquin	SJCM 8209	2507	Cx tarsalis	Lodi	50	CO2	8/31/2023	WNV
San Joaquin	SJCM 8209	2508	Cx tarsalis	Lodi	37	CO2	8/31/2023	WNV
San Joaquin	SJCM 8209	2509	Cx pipiens	Lodi	50	CO2	8/31/2023	WNV
San Joaquin	SJCM 8209	2510	Cx pipiens	Lodi	50	CO2	8/31/2023	WNV
San Joaquin	SJCM 8209	2511	Cx pipiens	Lodi	38	CO2	8/31/2023	WNV
San Joaquin	SJCM 8222	2493	Cx pipiens	Stockton	20	CO2	8/31/2023	WNV
San Joaquin	SJCM 8230	2480	Cx tarsalis	Thornton	100	CO2	8/29/2023	WNV
San Joaquin	SJCM 8230	2481	Cx tarsalis	Thornton	100	CO2	8/29/2023	WNV
San Joaquin	SJCM 8230	2484	Cx pipiens	Thornton	50	CO2	8/29/2023	WNV
San Joaquin	SJCM 8253	2519	Cx tarsalis	Linden	54	CO2	8/31/2023	WNV
San Joaquin	SJCM 8253	2520	Cx pipiens	Linden	32	CO2	8/31/2023	WNV
Santa Clara	STCL 31206	2769	Cx pipiens	San Jose	1	CO2-EVS	8/24/2023	WNV
Santa Clara	STCL 31524	2607	Cx pipiens	San Jose	1	CO2-EVS	8/22/2023	WNV
Santa Clara	STCL 31671	2670	Cx tarsalis	San Jose	47	GRVD	8/23/2023	WNV
Santa Clara	STCL 32150	2797	Cx tarsalis	Milpitas	1	GRVD	8/25/2023	WNV
Shasta	SHAS 10020	1767	Cx pipiens	Anderson	30	CO2	8/29/2023	WNV
Shasta	SHAS 1009	1723	Cx tarsalis	Bella Vista	50	CO2	8/29/2023	WNV
Shasta	SHAS 10130	1736	Cx tarsalis	Cottonwood	21	CO2	8/29/2023	WNV
Shasta	SHAS 204	1777	Cx pipiens	Redding	18	CO2	8/30/2023	WNV
Shasta	SHAS 410	1742	Cx pipiens	Cottonwood	26	CO2	8/29/2023	WNV
Shasta	SHAS 459	1784	Cx pipiens	Redding	50	CO2	8/30/2023	WNV
Shasta	SHAS 459	1785	Cx pipiens	Redding	41	CO2	8/30/2023	WNV
Shasta	SHAS 549	1722	Cx pipiens	Anderson	45	BGPRO-SENT	8/28/2023	WNV
Shasta	SHAS 618	1730	Cx tarsalis	Anderson	27	CO2	8/29/2023	WNV
Shasta	SHAS 620	1780	Cx pipiens	Redding	50	CO2	8/30/2023	WNV
Shasta	SHAS 629	1757	Cx pipiens	Anderson	50	CO2	8/29/2023	WNV
Shasta	SHAS 629	1759	Cx pipiens	Anderson	50	CO2	8/29/2023	WNV
Shasta	SHAS 634	1750	Cx pipiens	Anderson	50	CO2	8/29/2023	WNV
Shasta	SHAS 635	1754	Cx pipiens	Anderson	46	CO2	8/29/2023	WNV
Solano	SOLA 252	350	Cx tarsalis	Fairfield	50	CO2	8/30/2023	WNV
Solano	SOLA 252	352	Cx tarsalis	Fairfield	34	CO2	8/30/2023	WNV
Stanislaus	EAST 2021	23200	Cx pipiens	Modesto	15	GRVD	8/15/2023	WNV
Stanislaus	EAST 2050	23205	Cx pipiens	Modesto	30	GRVD	8/22/2023	WNV
Stanislaus	TRLK 1107	1408	Cx pipiens	Denair	50	CO2	8/29/2023	WNV
Stanislaus	TRLK 1107	1409	Cx pipiens	Denair	35	CO2	8/29/2023	WNV
Stanislaus	TRLK 1202	1416	Cx tarsalis	Hughson	32	CO2	8/29/2023	WNV
Stanislaus	TRLK 1209	1361	Cx pipiens	Ceres	50	CO2	8/29/2023	WNV
Stanislaus	TRLK 1302	1359	Cx pipiens	Turlock	30	CO2	8/29/2023	WNV
Stanislaus	TRLK 1308	1389	Cx pipiens	Turlock	50	CO2	8/29/2023	WNV
Stanislaus	TRLK 1308	1390	Cx pipiens	Turlock	50	CO2	8/29/2023	WNV
Stanislaus	TRLK 1309	1415	Cx pipiens	Hughson	37	CO2	8/29/2023	WNV
Stanislaus	TRLK 17152	1391	Cx pipiens	Denair	50	CO2	8/29/2023	WNV
Stanislaus	TRLK 17152	1395	Cx pipiens	Denair	50	CO2	8/29/2023	WNV

California Arbovirus Surveillance Bulletin #21
Week 35 Friday, September 1, 2023

Stanislaus	TRLK 17152	1396	Cx pipiens	Denair	50	CO2	8/29/2023	WNV
Stanislaus	TRLK 17152	1399	Cx pipiens	Denair	50	CO2	8/29/2023	WNV
Stanislaus	TRLK 1904	1369	Cx pipiens	Turlock	50	CO2	8/29/2023	WNV
Stanislaus	TRLK 1966	1419	Cx pipiens	Hughson	50	CO2	8/29/2023	WNV
Stanislaus	TRLK 408	1373	Cx pipiens	Turlock	14	CO2	8/29/2023	WNV
Stanislaus	TRLK 410	1366	Cx tarsalis	Ceres	13	CO2	8/29/2023	WNV
Stanislaus	TRLK 432	1381	Cx pipiens	Turlock	50	CO2	8/29/2023	WNV
Stanislaus	TRLK 432	1383	Cx pipiens	Turlock	50	CO2	8/29/2023	WNV
Stanislaus	TRLK 432	1384	Cx pipiens	Turlock	50	CO2	8/29/2023	WNV
Stanislaus	TRLK 432	1386	Cx pipiens	Turlock	50	CO2	8/29/2023	WNV
Stanislaus	TRLK 432	1387	Cx pipiens	Turlock	50	CO2	8/29/2023	WNV
Stanislaus	TRLK 432	1388	Cx pipiens	Turlock	36	CO2	8/29/2023	WNV
Stanislaus	TRLK 526	1402	Cx pipiens	Denair	50	CO2	8/29/2023	WNV
Stanislaus	TRLK 526	1403	Cx pipiens	Denair	31	CO2	8/29/2023	WNV
Stanislaus	TRLK 526	1404	Cx tarsalis	Denair	46	CO2	8/29/2023	WNV
Sutter	SUYA 132	515	Cx tarsalis	Live Oak	16	CO2	8/29/2023	WNV
Sutter	SUYA 14	501	Cx tarsalis	Sutter	39	REST	8/21/2023	WNV
Sutter	SUYA 24	512	Cx tarsalis	Yuba City	7	REST	8/21/2023	WNV
Sutter	SUYA 44	493	Cx tarsalis	Pleasant Grove	50	CO2	8/22/2023	WNV
Sutter	SUYA 44	517	Cx tarsalis	Pleasant Grove	50	CO2	8/29/2023	WNV
Sutter	SUYA 44	519	Cx tarsalis	Pleasant Grove	50	CO2	8/29/2023	WNV
Sutter	SUYA 68	508	Cx tarsalis	Sacramento, Ca	16	REST	8/22/2023	WNV
Tulare	DLNO 145	289	Cx tarsalis	Earlimart	44	CO2	8/25/2023	WNV
Tulare	DLNO 212	291	Cx quinquefasciatus	Pixley	31	CO2	8/25/2023	WNV
Tulare	DLTA 632144	5473	Cx quinquefasciatus	Delft Colony	13	CO2	8/29/2023	WNV
Tulare	DLTA 632144	5474	Cx tarsalis	Delft Colony	50	CO2	8/29/2023	WNV
Tulare	DLTA 632144	5474	Cx tarsalis	Delft Colony	50	CO2	8/29/2023	SLEV
Tulare	DLTA 632144	5475	Cx tarsalis	Delft Colony	47	CO2	8/29/2023	WNV
Tulare	DLTA 632144	5475	Cx tarsalis	Delft Colony	47	CO2	8/29/2023	SLEV
Tulare	DLTA 632144	5476	Cx tarsalis	Delft Colony	10	CO2	8/29/2023	SLEV
Tulare	DLTA 632263	5470	Cx quinquefasciatus	Delft Colony	37	CO2	8/29/2023	WNV
Tulare	DLTA 633024	5471	Cx quinquefasciatus	Kingsburg	19	CO2	8/29/2023	WNV
Tulare	DLTA 64071	5497	Cx quinquefasciatus	Dinuba	50	BGSENT	8/29/2023	WNV
Tulare	DLTA 64071	5498	Cx quinquefasciatus	Dinuba	50	BGSENT	8/29/2023	WNV
Tulare	DLTA 64071	5499	Cx quinquefasciatus	Dinuba	50	BGSENT	8/29/2023	WNV
Tulare	DLTA 64071	5500	Cx quinquefasciatus	Dinuba	43	BGSENT	8/29/2023	WNV
Tulare	DLTA 6408	5504	Cx quinquefasciatus	Dinuba	50	BGSENT	8/29/2023	WNV
Tulare	DLTA 6408	5504	Cx quinquefasciatus	Dinuba	50	BGSENT	8/29/2023	SLEV
Tulare	DLTA 64084	5465	Cx quinquefasciatus	Dinuba	20	BGSENT	8/25/2023	WNV
Tulare	DLTA 6416	5353	Cx quinquefasciatus	Dinuba	13	BGSENT	8/22/2023	WNV
Tulare	DLTA 64161	5528	Cx quinquefasciatus	Dinuba	50	GRVD	8/29/2023	WNV
Tulare	DLTA 64161	5528	Cx quinquefasciatus	Dinuba	50	GRVD	8/29/2023	SLEV
Tulare	DLTA 6417	5523	Cx quinquefasciatus	Dinuba	50	BGSENT	8/29/2023	WNV
Tulare	DLTA 6417	5525	Cx quinquefasciatus	Dinuba	10	BGSENT	8/29/2023	WNV
Tulare	DLTA 6420	5462	Cx quinquefasciatus	Dinuba	29	GRVD	8/25/2023	SLEV
Tulare	DLTA 6420	5463	Cx stigmatosoma	Dinuba	10	GRVD	8/25/2023	WNV
Tulare	DLTA 6420	5463	Cx stigmatosoma	Dinuba	10	GRVD	8/25/2023	SLEV
Tulare	DLTA 6518	5457	Cx quinquefasciatus	Cutler	15	GRVD	8/25/2023	WNV
Tulare	DLTA 6518	5457	Cx quinquefasciatus	Cutler	15	GRVD	8/25/2023	SLEV
Tulare	DLTA 6520	5435	Cx quinquefasciatus	Cutler	26	BGSENT	8/24/2023	SLEV
Tulare	DLTA 7	5449	Cx stigmatosoma	Dinuba	32	CO2	8/25/2023	SLEV
Tulare	DLTA 73161	5494	Cx quinquefasciatus	Traver	42	BGSENT	8/29/2023	SLEV
Tulare	DLTA 8324	5466	Cx quinquefasciatus	Goshen	43	BGSENT	8/25/2023	SLEV
Tulare	DLTA 8413	5492	Cx quinquefasciatus	Visalia	50	BGSENT	8/29/2023	SLEV
Tulare	DLTA 8413	5493	Cx quinquefasciatus	Visalia	50	BGSENT	8/29/2023	WNV
Tulare	DLTA 8414	5484	Cx quinquefasciatus	Visalia	12	BGSENT	8/29/2023	WNV
Tulare	DLTA 841543	5445	Cx quinquefasciatus	Visalia	49	CO2	8/25/2023	WNV
Tulare	DLTA 84191	5477	Cx quinquefasciatus	Visalia	43	GRVD	8/29/2023	WNV
Tulare	DLTA 84191	5522	Cx quinquefasciatus	Visalia	46	BGSENT	8/29/2023	SLEV
Tulare	DLTA 84193	5426	Cx quinquefasciatus	Visalia	29	GRVD	8/24/2023	SLEV
Tulare	DLTA 842122	5444	Cx quinquefasciatus	Visalia	47	CO2	8/25/2023	WNV
Tulare	DLTA 8422	5447	Cx quinquefasciatus	Goshen	13	GRVD	8/25/2023	WNV
Tulare	DLTA 8422	5487	Cx quinquefasciatus	Goshen	50	BGSENT	8/29/2023	WNV
Tulare	DLTA 8422	5488	Cx quinquefasciatus	Goshen	50	BGSENT	8/29/2023	SLEV
Tulare	DLTA 8425	5450	Cx quinquefasciatus	Visalia	11	GRVD	8/25/2023	WNV
Tulare	DLTA 8426	5413	Cx quinquefasciatus	Visalia	38	BGSENT	8/24/2023	WNV
Tulare	DLTA 84344	5438	Cx quinquefasciatus	Visalia	13	BGSENT	8/25/2023	SLEV
Tulare	DLTA 9411	5424	Cx quinquefasciatus	Visalia	15	BGSENT	8/24/2023	WNV
Yolo	SAYO 103007	5939	Cx tarsalis	Dunnigan	3	GRVD	8/29/2023	WNV

California Arbovirus Surveillance Bulletin #21
Week 35 Friday, September 1, 2023

Yolo	SAYO 116002	5942	Cx tarsalis	Knights Landing	46	CO2	8/29/2023	WNV
Yolo	SAYO 123005	5729	Cx tarsalis	Madison	4	CO2	8/25/2023	WNV
Yolo	SAYO 124007	5741	Cx tarsalis	Woodland	12	CO2	8/25/2023	WNV
Yolo	SAYO 125016	5893	Cx tarsalis	Woodland	21	CO2	8/29/2023	WNV
Yolo	SAYO 125018	5544	Cx tarsalis	Woodland	50	CO2	8/23/2023	SLEV
Yolo	SAYO 125018	5916	Cx tarsalis	Woodland	50	CO2	8/29/2023	WNV
Yolo	SAYO 125033	5895	Cx tarsalis	Woodland	50	CO2	8/29/2023	WNV
Yolo	SAYO 125033	5896	Cx tarsalis	Woodland	50	CO2	8/29/2023	WNV
Yolo	SAYO 135006	5748	Cx tarsalis	Woodland	50	CO2	8/25/2023	WNV
Yolo	SAYO 143008	5733	Cx pipiens	Winters	11	CO2	8/25/2023	WNV
Yolo	SAYO 145005	5849	Cx tarsalis	Davis	50	CO2	8/29/2023	WNV
Yolo	SAYO 145009	5870	Cx pipiens	Davis	8	GRVD	8/29/2023	WNV
Yolo	SAYO 145018	5842	Cx tarsalis	Davis	28	CO2	8/29/2023	WNV
Yolo	SAYO 146	5884	Cx tarsalis	Woodland	42	CO2	8/29/2023	WNV
Yolo	SAYO 146017	5853	Cx tarsalis	Davis	50	CO2	8/29/2023	WNV
Yolo	SAYO 146017	5854	Cx tarsalis	Davis	50	CO2	8/29/2023	WNV
Yuba	SUYA 10	529	Cx tarsalis	Olivehurst	31	CO2	8/30/2023	WNV
Yuba	SUYA 108	494	Cx tarsalis	Plumas Lake	18	CO2	8/23/2023	WNV
Yuba	SUYA 4	496	Cx tarsalis	Wheatland	17	CO2	8/23/2023	WNV
Yuba	SUYA 4	526	Cx tarsalis	Wheatland	28	CO2	8/30/2023	WNV

Sentinel Chickens

County	Site Code	Nearest City	Date Bled	Virus	Band 01	Band 02	Band 03
Butte	BUCO 1	Chico	8/29/2023	WNV	2128	2129	
Butte	BUCO 6	Chico	8/29/2023	WNV	2157		
Butte	BUCO 7	Chico	8/29/2023	WNV	2165	2167	
Colusa	CLSA 0	Colusa	8/22/2023	WNV	1857		
Contra Costa	CNTR 7402	Oakley	8/28/2023	WNV	1903	1904	
Sacramento	SAYO 261013	Isleton	8/31/2023	WNV	2661	2662	2664
San Benito	SBVC 0	Hollister	8/29/2023	WNV	1965	1968	
Shasta	SHAS 9704	Redding	8/28/2023	WNV	2733	2736	2739
Solano	SOLA 148	Fairfield	8/28/2023	WNV	2753	2757	
Solano	SOLA 15	Winters	8/28/2023	WNV	2746		
Solano	SOLA 50	Fairfield	8/28/2023	WNV	2762		
Yolo	SAYO 103013	Dunnigan	8/28/2023	WNV	2678		

California Arbovirus Surveillance Bulletin #21
Week 35 Friday, September 1, 2023

TEST PROTOCOLS

Humans:

Specimens are tested by local laboratories with an IgM or IgG immunofluorescent assay (IFA) and/or an IgM enzyme immunoassay (EIA). Specimens with inconclusive results are forwarded to the California Department of Public Health Viral and Rickettsial Disease Laboratory (VRDL) for further testing with a plaque reduction neutralization test (PRNT).

Dead Birds

Oral swab samples collected from bird carcasses are tested at the UC Davis Arbovirus Research and Training laboratory (DART) or at a local agency for West Nile virus by RT-qPCR.

Sentinel Chickens:

Dried blood spot samples from sentinel chickens are tested at the California Department of Public Health Vector-Borne Disease Laboratory for IgG antibodies to West Nile, St. Louis encephalitis, and western equine encephalomyelitis viruses by an EIA. Positive samples are confirmed by IFA, western-blot, or PRNT.

Mosquito Pools:

Mosquito pools are tested at DART or at a local agency for West Nile, western equine encephalomyelitis, and St. Louis encephalitis viral RNA using a multiplex RT-qPCR. Invasive *Aedes* mosquitoes (*Ae. aegypti* and *Ae. albopictus*) are also tested at DART for chikungunya, dengue, and Zika viral RNA by a separate RT-qPCR.

Website Information: For updated information on WNV in California, please visit the California WNV website, <https://westnile.ca.gov>, or the California Vector-Borne Disease Surveillance System website, <https://maps.vectorsurv.org>.

Prepared by the Vector-Borne Disease Section (Infectious Diseases Branch), California Department of Public Health, 850 Marina Bay Parkway, Richmond, CA 94804. Questions concerning this bulletin should be addressed to Hannah Romo: Hannah.romo@cdph.ca.gov

Agenda Item # 8

BOARD OF TRUSTEES

Charlie Pitigliano
County of Tulare
Robert Uchita
County of Tulare
Stan Creelman
County of Tulare
Tony Nunes
County of Tulare
Craig Smith
City of Tulare
Charles Mayer
City of Visalia

TULARE MOSQUITO ABATEMENT DISTRICT

District Headquarters: Mefford Field - Tulare
6575 Dale Fry Rd • Tulare, CA 93274

(559) 686-6628

TulareMosquito@gmail.com

www.tularemosquito.com

GENERAL MANAGER
Michelle Dempsey

OPERATIONS DIRECTOR
Jacob Davis

ADMINISTRATIVE ASSISTANT
Sheri Davis



Subject: CONTACT

In conformance with district policy and California Health and Safety Code, Section 2000, you are directed to charge each producer of mosquitoes for excessive application of chemicals for the purpose of mosquito control.

You are hereby notified as Owner or Responsible Party; you have water conditions located on your property which are conducive to the breeding of mosquitoes. This source must be corrected to reduce mosquito breeding and eliminate the nuisance and public health problem.

It is required by the Owner or Responsible Party to correct or eliminate the following problem(s):

- (1) Preventing water from standing for more than 5 days. After 5 days, eggs that are already in the field will emerge and reach adulthood.**
- (2) Before the field is re-irrigated allow the water to percolate or evaporate. A second species will lay its eggs, which requires approximately 7 days to reach adulthood. These mosquitoes can transmit disease, like West Nile virus and St. Louis encephalitis.**
- (3) Vegetation attracts mosquitoes. Eliminate vegetation by mowing/tilling the soil or spraying herbicides.**

This area must be treated to control mosquitoes. If any of these criteria are not met, you will be charged for material and labor for each treatment until the problems are corrected. It can be very expensive to treat large fields. The cost of control products ranges from \$20.00 per acre for non-residual products, to \$150.00 for products that can last up to 30 days. This means a 50-acre treatment could cost up to \$7,500 dollars. Please contact the District to discuss control options that best serve the residents of Tulare County.

If the violations are not resolved, the General Manager may also recommend a formal abatement of the property. The Board of Trustees may take necessary actions to remedy the public nuisance by fining the owner up to \$1,000/day for each day the public nuisance exists.

However, it is not the intention of the Board of Trustees to levy such charges without prior notice. Mosquito breeding producers will be presented with a copy of this Contact at the time the problem occurs.

Sincerely,

Charlie Pitigliano, President – Board of Trustees

Agenda Item # 9

Bronco Trailer #2

30258 Road 68, Ste. #4 Visalia, CA 93291

Phone: (559) 307-0877
 Fax: (559) 747-2233

Salesperson:
 F&I Manager:

Today's Date: 08/16/2023
 Deal Date: 08/16/2023

BUYER	CO-BUYER	INSURANCE
Name: TULARE MOSQUITO ABATEMENT DISTRICT		
Address: 6575 Dale Fry Rd.		
TULARE, CA 93274	CA	
County: TULARE		
Home Phone:		
Cell Phone:		
Work Phone: (559) 804-5529		
Email: tularemosquito.davis@gmail.com		

ANNUAL % RATE	FINANCE CHARGE	AMOUNT FINANCED	TOTAL OF PAYMENTS	TOTAL SALE PRICE
0.00 %	\$0.00	\$8,837.01	\$8,837.01	Down: \$0.00 \$8,837.01

Vehicle Cash Price:	\$8,000.00
Document Processing Charge:	\$85.00
Sales Tax @ 8.2500%:	\$667.01
Subtotal:	\$8,752.01
Electronic Filing Fee:	\$33.00
License Fees:	\$45.00
Official Fees:	\$7.00
Total:	\$8,837.01
Cash Down:	\$0.00
Total Downpayment:	\$0.00
Amount Financed:	\$8,837.01

LICENSE FEES	
Base DMV Fee:	\$20.00
Add On Amount:	\$24.00
RLP Fee:	\$1.00
Electronic Filing Fee:	\$33.00
Total:	\$78.00
OFFICIAL FEES	
Tire Fee:	\$7.00
Total:	\$7.00

1 Monthly Pmt @:	\$8,837.01
Due On:	08/16/2023

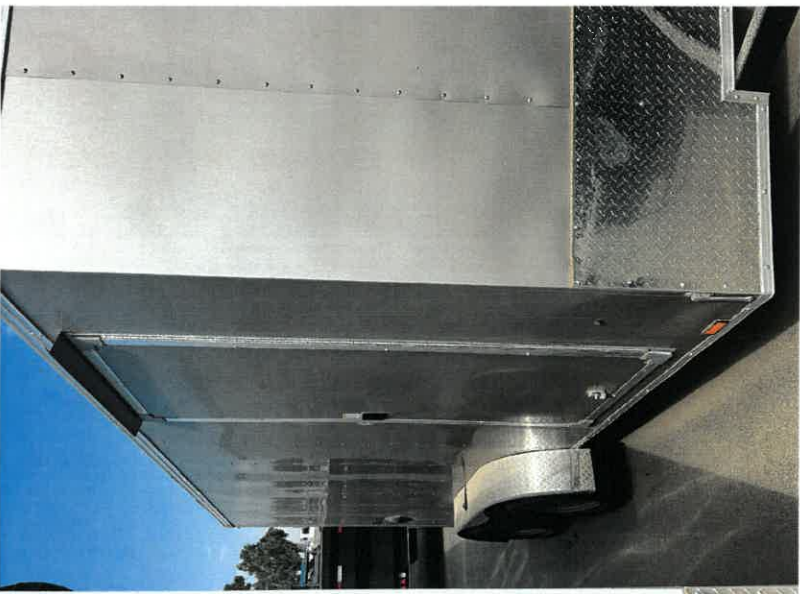
Price is good until we have in stock

items marked with * are estimated

VEHICLE INFORMATION

PURCHASE - NEW	TRADE-IN(S)
Stock Number: CT41084	
VIN: 5JW7E1420PF041084	
Year: 2023	
Make: CAREX	
Model: CSCBA7.0X14TE2FE	
Body Style: VAN	
Odometer:	

Seller Signature: _____ Title: _____ Date: _____





DIRECTIONS

(559) 245-1320

SEARCH TRAILERS FINANCING STORE FINDER

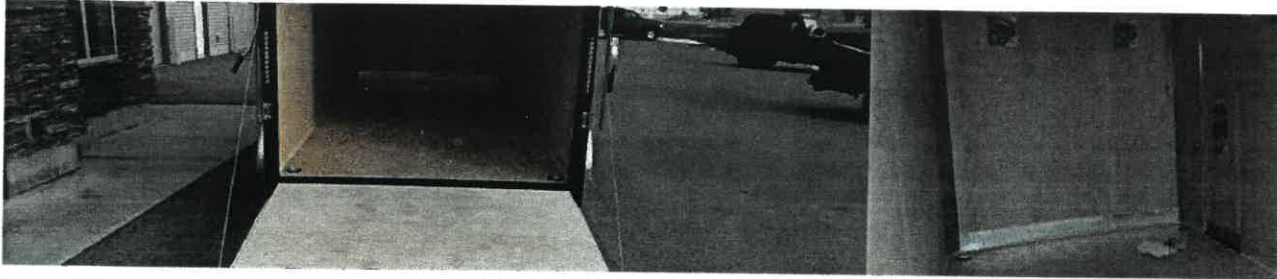
MORE

← Back to Inventory

TrailersPlus Fresno 7' Cargo 4RALS1423RK092583

MAIL

7 X 14 LoadRunner Cargo Trailer



Price: **\$9099**
MSRP: ~~\$17680~~

Financing Available from \$204.67/mo.

SCHEDULE AN APPOINTMENT

RESERVE TRAILER

ADD TO CART

Description Specifications

We value your privacy

We use cookies to enhance your browsing experience, serve personalized ads or content, and analyze our traffic. By clicking "Accept All", you consent to our use of cookies.

Customize	Reject All	Accept All
-----------	------------	------------

inner Cargo

Text us



**New 2023 Wells Cargo Cargo Trailer
FT714T2-D**

Stock # W01793

\$8,895

The Trailer Specialist

Popularity Stats

- 👁 You are the first user to view this listing
- ♥ Be the first user to .
- 📉 The price has not decreased recently

Description

Stock # W01793

NEW 2023 Wells Cargo FT714T2-D FAST TRAC 7X14 7K GVW Tandem Axle Enclosed Cargo Trailer **1**

Value driven with a spirit that's born to haul! The FastTrac brings a whole new level of value to the light-duty recreational cargo trailer market. A balanced combination of versatility and affordability, the FastTrac delivers on all fronts. From its unpretentious styling to its uncompromising dependability, only Wells Cargo could pack so much value into an entry-level trailer.

- 7 x 14' Tandem Axle Fast Trac
- 2,170 # Empty Weight
- 7,000 # GVW
- Upgraded features:
- 7' inside height
- 32X78 side PT door-RH hinge
- Deluxe Package Includes:
- 3/8" PlexCore interior sidewall liner
- .030 refinished aluminum
- Exterior choice of nine exterior colors
- 5000lb. floor mounted d-rings
- 16" Plexcore ramp extension
- Standard features:
- Safety chains with clevis hook and latch
- E-Z lube hubs
- 12v LED exterior lighting
- 3/4" PlexCore High-performance interior decking
- Rear ramp door with spring assist
- 24" OC roof bows
- 4-wheel electric brakes
- 15" radial tires
- Spring axles with 4" drop
- 12v LED dome lights
- 500 lb surface wall mounted rope-ring
- Entire chassis undercoated
- Smooth aluminum Jeep fenders
- 16" OC vertical posts
- 32" side entry door with bar lock
- 16" starbright stone guard
- 16" OC floor crossmembers
- Flow-thru sidewall vents
- White .024 aluminum exterior with screws
- 1-year limited warranty
- Steel tube main rails
- Financing Available!

While we always strive for complete accuracy, please confirm specifications with one of our sales representatives **.**

Message From The Trailer Specialist

Financing available. Please visit our website at www.thetrailerspecialist.com for more information. We carry horse & livestock trailers, utility, cargo, equipment and dump trailers, car parts department.

Have a question?

The Trailer Specialist: Hi, how can I help you?

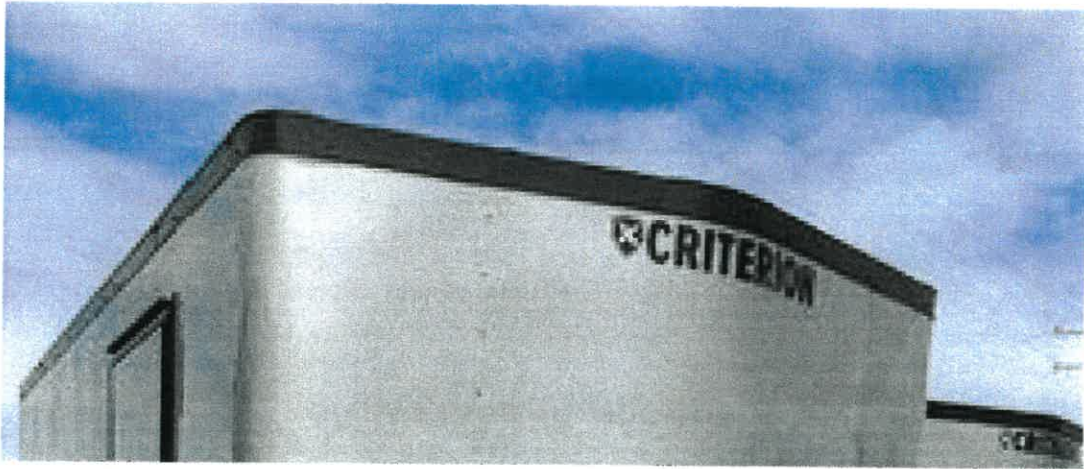


[FIND A LOCATION](#) ▾

888-885-1005

[INVENTORY](#) [TRAILER GUIDE](#) [TRUCK BEDS](#) [SERVICES](#) [PARTS](#) [LOCATIONS](#) [CONTACT](#)

[HOME](#) ▸ [INVENTORY](#) ▸ [CT71 CRITERION 7X14 TA RD SILVER STD 7 HT BY CRITERION](#)



CT71 CRITERION 7X14 TA RD SILVER STD 7 HT BY CRITERION

Hitch Type
Bumper Pull

Year
2023

Trailer World Price
\$9,572

As Low As
\$174.23 / month*
*applicable taxes and fees not included

Trailer Located at: **Fowler, CA**
Not your Location? [Find a Store Near You](#)

CHECK AVAILABILITY

CALL NOW (559) 838-9393

▸ [FINANCING](#)

Fast Pass Trailers

Phone: 5592707565

1032 N Blackstone

Fresno, CA 93701

Email: fastpasstrailers@gmail.com



2023 C & B Quality Trailers EC-7127TA Cargo / Enclosed Trailer

Stock#: T0091

VIN#: 4JUBE1322PN067279

Year: 2023

Manufacturer: C & B Quality Trailers

Color: GRAY

URL: <https://fastpasstrailers.com/2023-c-b-quality-trailers-ec-7127ta-cargo-enclosed-trailer-RXup.html>

Price	
--------------	--

	\$9,499.00
--	-------------------

Description

Manager's Report



National Association
 4000 West Broadway
 Robbinsdale, MN 55422
 763-971-1111

 * The payment terms for U.S. Bank are Net 28 unless contracted otherwise. To *
 * reduce the receipt time on your payments, email your account information to *
 * CorporatePayablesNewVendorGroup@usbank.com and begin receiving your *
 * payments via ACH! Questions, please contact Customer Service at 763-971-1111. *

No. 7050735
 Check Date: 08/29/2023

TULARE MOSQUITO ABATEMENT DISTRICT, 6575 DALE FRY RD, TULARE CA 93274

Description	Date	Gross Amount	Discount Amount	Net Amount Paid
ECR163310623 US Bank Corp Card NASPO Contract payment for spend in Q(2) Year(2023). Contract Payment ID 16331. ATTN Card Admin. Questions contact RM Shannon Ness at Email shannon.ness@usbank.com	08/18/23	\$649.13	\$0.00	\$649.13
Totals		\$649.13	\$0.00	\$649.13